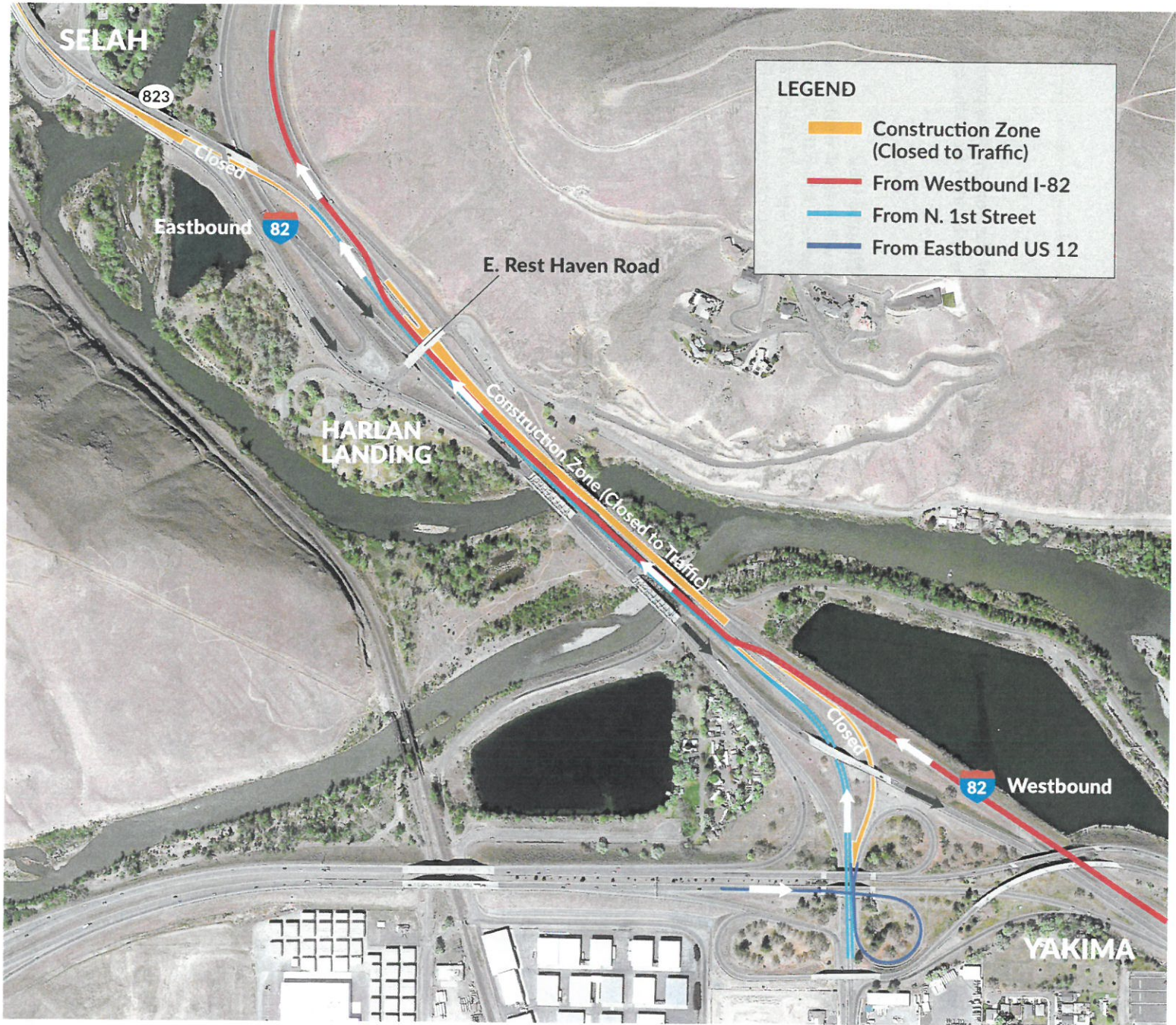


# I-82 Pavement Preservation Project

## Follow signs through half-mile detour.

July 2022



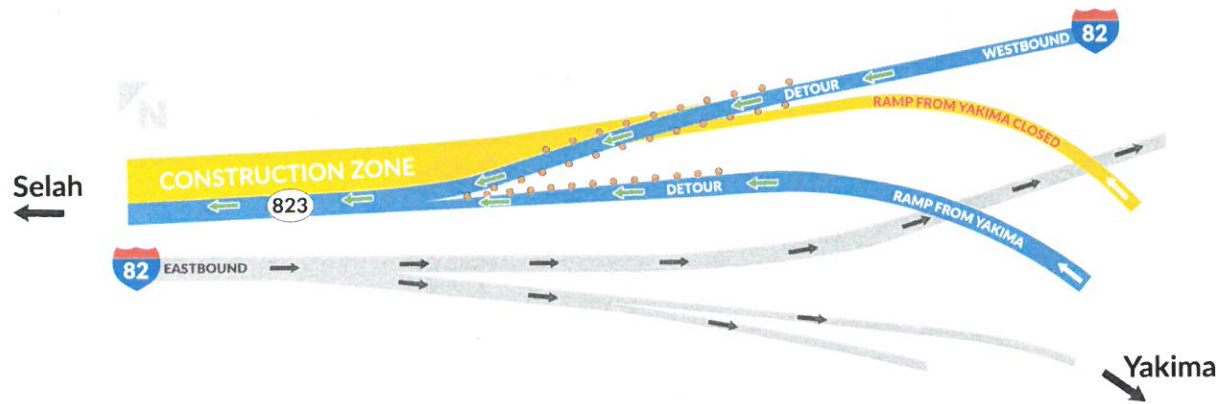


# I-82 Pavement Preservation Project Westbound Detour via SR 823

## Month-long detour this summer from Yakima to Selah as WSDOT improves sections of I-82

This summer, WSDOT and contractor crews are preserving 8-miles of I-82 from the Fred G. Redmon Bridge to N. 1st Street. Part of the work involves paving a section of I-82 across the Naches and Yakima River Bridges. For the safety of our crews and to help reduce the duration drivers will be impacted, westbound I-82 traffic between Yakima and Selah will be detoured onto SR 823 for about a month.

### Entering the detour from the Westbound I-82



#### Detour

##### From westbound I-82

Detour signs will direct all westbound traffic onto the SR 823 bridge just before the Naches River Bridge. Once on SR 823, signs will direct traffic to move to the far-right lanes to continue west to Ellensburg or to stay in the far left lane to go into Selah.

##### From N. 1st Street in Yakima

The westbound on-ramp to I-82 will be closed. Take the exit to SR 823. Once on SR 823, signs will direct traffic to move to the far-right lanes to continue west to Ellensburg or stay in the far left lane to go into Selah. Eastbound US 12 traffic headed into Selah or Ellensburg will follow the detour route from N. 1st Street to SR 823.

#### Detour

##### From eastbound I-82

Eastbound SR 823 will be closed, and signs will direct travelers to take eastbound I-82.

#### Access to Rest Haven Park & Ride and Harlan Landing

Westbound I-82 drivers will need to turn around at E. Selah Road (exit 29) then head east to exit 30 to access the Rest Haven Park and Ride and Harlan Landing.

Eastbound US 12 traffic headed into Selah or Ellensburg will follow the detour route from N. 1st Street to SR 823.

#### Weekly construction updates

<https://wsdot.wa.gov/travel/roads-bridges/central-and-eastern-washington-weekly-travel-planner>

Signs will guide travelers through the detour. Watch for reduced speeds and please drive carefully through our work zones.

### Exiting the detour from the Westbound I-82

