



Date: 6/8/2022 Author: RAY MIRELEZ Project: CITY OF SELAH CRUSHER CANYON RD

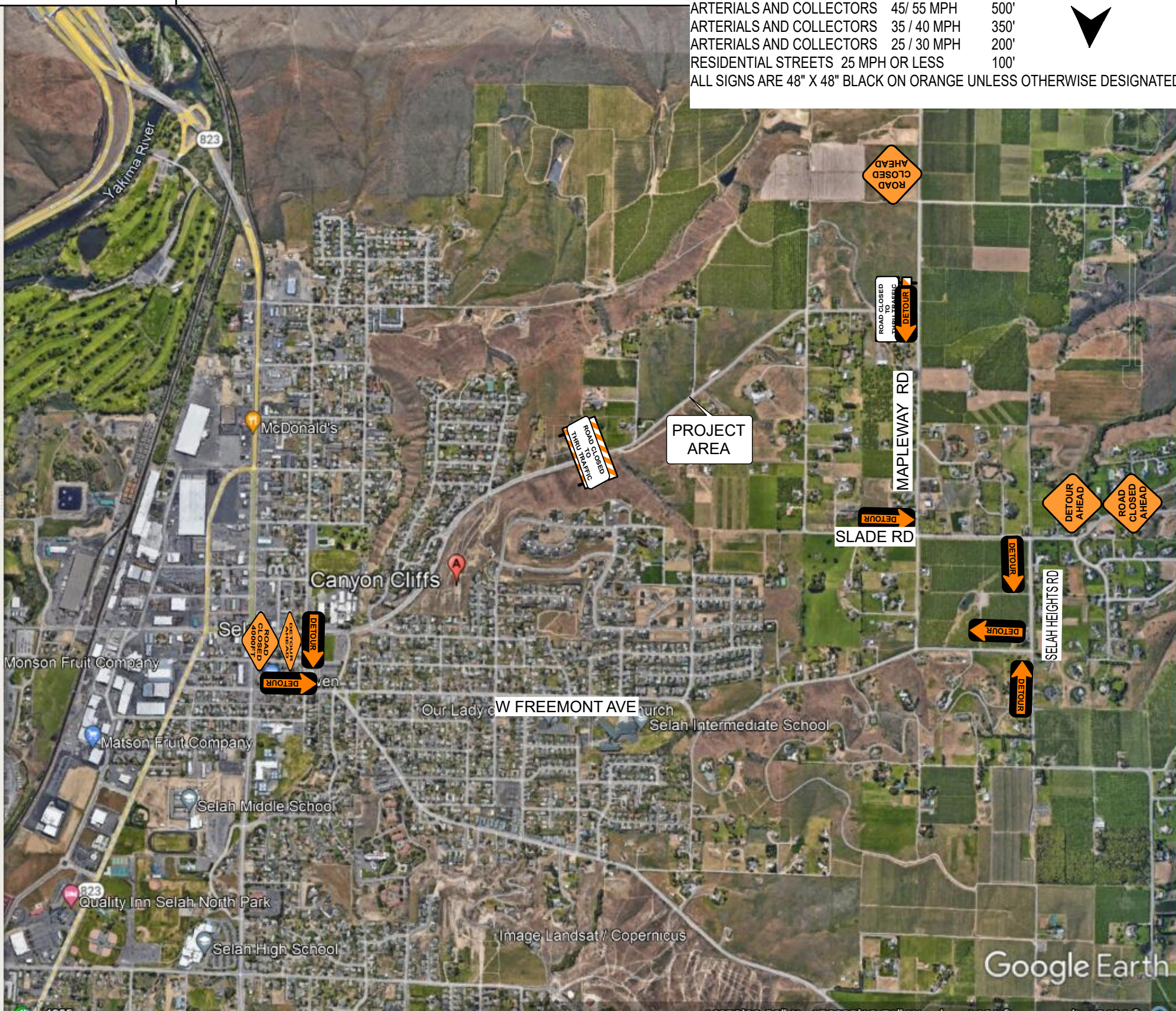
Comments:

THIS TRAFFIC CONTROL PLAN IS TO PROVIDE A ROAD CLOSURE WITH DETOUR FOR CREW TO COMPLETE SCOPE OF WORK ALL SIGNS AND DEVICES WILL BE ACCORDANCE WITH MUTCD

SIGN SPACING

ARTERIALS AND COLLECTORS	45/ 55 MPH	500'
ARTERIALS AND COLLECTORS	35 / 40 MPH	350'
ARTERIALS AND COLLECTORS	25 / 30 MPH	200'
RESIDENTIAL STREETS	25 MPH OR LESS	100'

ALL SIGNS ARE 48" X 48" BLACK ON ORANGE UNLESS OTHERWISE DESIGNATED



Google Earth