

Selah Recycling Collection Calendar

2022

JANUARY

SUN	MON	TUE	WED	THU	FRI	SAT
						1
2	3	4	5	6	7	8
9	10	11	12	13	14	15
16	17	18	19	20	21	22
23	24	25	26	27	28	29
30	31					

FEBRUARY

SUN	MON	TUE	WED	THU	FRI	SAT
		1	2	3	4	5
6	7	8	9	10	11	12
13	14	15	16	17	18	19
20	21	22	23	24	25	26
27	28					

MARCH

SUN	MON	TUE	WED	THU	FRI	SAT
		1	2	3	4	5
6	7	8	9	10	11	12
13	14	15	16	17	18	19
20	21	22	23	24	25	26
27	28	29	30	31		

APRIL

SUN	MON	TUE	WED	THU	FRI	SAT
					1	2
3	4	5	6	7	8	9
10	11	12	13	14	15	16
17	18	19	20	21	22	23
24	25	26	27	28	29	30

MAY

SUN	MON	TUE	WED	THU	FRI	SAT
1	2	3	4	5	6	7
8	9	10	11	12	13	14
15	16	17	18	19	20	21
22	23	24	25	26	27	28
29	30	31				

JUNE

SUN	MON	TUE	WED	THU	FRI	SAT
			1	2	3	4
5	6	7	8	9	10	11
12	13	14	15	16	17	18
19	20	21	22	23	24	25
26	27	28	29	30		

JULY

SUN	MON	TUE	WED	THU	FRI	SAT
					1	2
3	4	5	6	7	8	9
10	11	12	13	14	15	16
17	18	19	20	21	22	23
24	25	26	27	28	29	30
31						

AUGUST

SUN	MON	TUE	WED	THU	FRI	SAT
	1	2	3	4	5	6
7	8	9	10	11	12	13
14	15	16	17	18	19	20
21	22	23	24	25	26	27
28	29	30	31			

SEPTEMBER

SUN	MON	TUE	WED	THU	FRI	SAT
				1	2	3
4	5	6	7	8	9	10
11	12	13	14	15	16	17
18	19	20	21	22	23	24
25	26	27	28	29	30	

OCTOBER

SUN	MON	TUE	WED	THU	FRI	SAT
					1	
2	3	4	5	6	7	8
9	10	11	12	13	14	15
16	17	18	19	20	21	22
23	24	25	26	27	28	29
30	31					

NOVEMBER

SUN	MON	TUE	WED	THU	FRI	SAT
		1	2	3	4	5
6	7	8	9	10	11	12
13	14	15	16	17	18	19
20	21	22	23	24	25	26
27	28	29	30			

DECEMBER

SUN	MON	TUE	WED	THU	FRI	SAT
				1	2	3
4	5	6	7	8	9	10
11	12	13	14	15	16	17
18	19	20	21	22	23	24
25	26	27	28	29	30	31

BASIN
disposal
of YAKIMA

BASIN DISPOSAL OF YAKIMA, LLC
1405 W Ahtanum Rd • Union Gap, WA 98903

(509) 248-7533 | BASINDISPOSAL.COM

Recycling Made Easy!

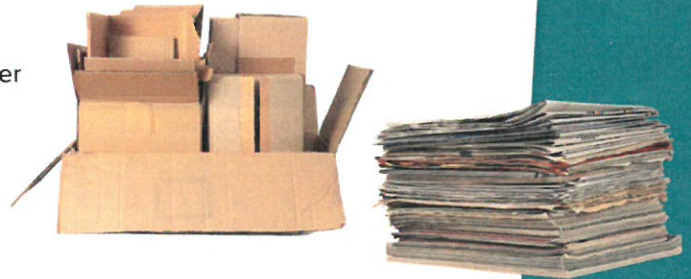
- **No need to sort!** Our single stream recycling service means all accepted recyclables can be put together in your 96-gallon recycling cart.
- Wheel your cart to the curb on a designated recycling collection day (see calendar on reverse).
- Place cart approximately three feet from your garbage cart. **All done!**



✓ ACCEPTED RECYCLABLES

PAPER:

- ✓ Newspaper
- ✓ Magazines & catalogs
- ✓ Direct mail & brochures
- ✓ Copier & printer paper
- ✓ File folders & note paper
- ✓ Corrugated cardboard
- ✓ Cereal, cracker, shoe boxes (chipboard)



METAL:

- ✓ Steel (tin) cans
- ✓ Aluminum cans



PLASTIC:

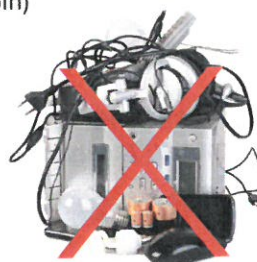
- ✓ #1 PET & #2 HDPE bottles (see mark on bottom of bottle)
- ✓ Soda bottles
- ✓ Water bottles
- ✓ Milk jugs
- ✓ Juice bottles/jugs
- ✓ Detergent & cleaning solution bottles



⊘ ITEMS NOT ACCEPTED

Any item not listed above, including:

- ⊘ Glass of any type
- ⊘ Paper milk or juice cartons
- ⊘ #3-#7 plastics (see mark on bottom of bottle)
- ⊘ Motor oil bottles
- ⊘ Anti-freeze bottles/jugs
- ⊘ Paint or aerosol cans
- ⊘ Plastic bags or plastic films of any kind
- ⊘ Flower pots
- ⊘ Yard waste (leaves, sticks, grass clippings, etc.)
- ⊘ Aseptic packaging
- ⊘ Shredded paper
- ⊘ Hazardous waste
- ⊘ Medical waste
- ⊘ Diapers
- ⊘ Fabric/textiles
- ⊘ Wood
- ⊘ Batteries
- ⊘ Light bulbs/tubes
- ⊘ Appliances
- ⊘ E-waste (computers, cell phones, TVs, electronics)
- ⊘ Wire, rope, chain, garden hoses, Christmas lights
- ⊘ Trash (put garbage in garbage bin)



BASIN
disposal
of YAKIMA