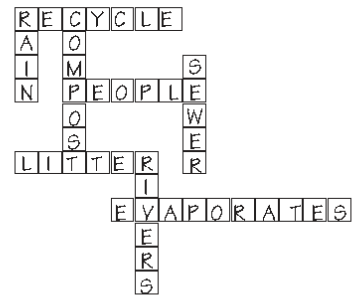


Answer Key

page 2

MATCHEM ANSWERS:
Top to bottom: B,D,C,A

page 5



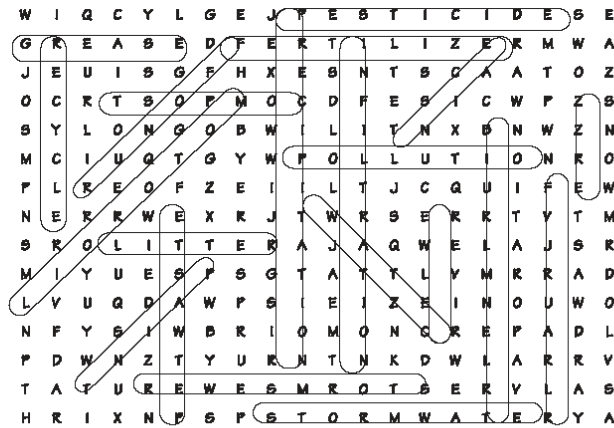
page 7

PEOPLE
FROGS
FISH
BUGS
DEER
DUCK
BIRDS
PLANTS
TURTLES
RABBITS
PETS

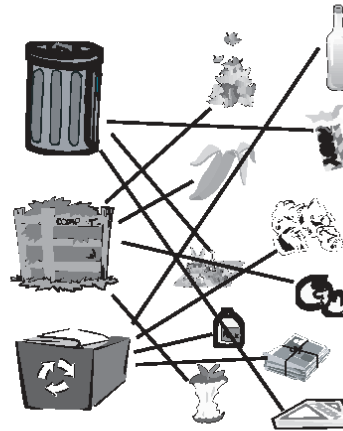
page 8

BIRD
BUG
DEER
DUCK
FISH
FROG
PEOPLE
PETS
PLANTS
RABBIT
SHEEP
TURTLE

page 9



page 3



page 4

1. WASH
2. HELP
3. REDUCE
4. SWEEP
5. RECYCLE
6. PICKUP
7. COMPOST
8. SHORTER

DUMP NO WASTE



ONLY RAIN IN THE DRAIN

Stormwater Activity Book

3rd-6th Grades

This message is brought to you by the
Yakima County Regional Stormwater Working Group

Additional information can be found at: <http://www.yakimacounty.us/Stormwater/>

To report a suspected illicit discharge in Sunnyside, Union Gap, Yakima,
or Yakima County, call: (509) 574-2300
or e-mail PublicServicesIllicitDischarge@co.yakima.wa.us

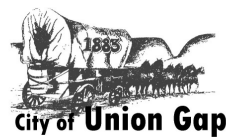
Word Search

Find the words from the list below. They may appear up, down, across, backwards and diagonally.

W I Q C Y L G E J P E S T I C I D E S E
 G R E A S E D F E R T I L I Z E R M W A
 J E U I S G F H X E S N T S C A A T O Z
 O C R T S O P M O C D F E S I C W P Z S
 S Y L O N G O B W I L I T N X B N W Z N
 M C I U Q T G Y W P O L L U T I O N R O
 P L R E O F Z E I I L T J C Q U I F E W
 N E R R W E X R J T W R S E R R T V T M
 S R O L I T T E R A J A Q W E L A J S R
 M I Y U E S P S G T A T T L V M R R A D
 L V U Q D A W P S I E I Z E I N O U W O
 N F Y S I W B R I O M O N C R E P A D L
 P D W N Z T Y U R N T N K D W L A R R V
 T A T U R E W E S M R O T S E R V L A S
 H R I X N P S P S T O R M W A T E R Y A

- | | | |
|------------|---------------|------------|
| MOTOR OIL | PESTICIDES | STORMWATER |
| GREASE | FERTILIZER | STORMSEWER |
| RECYCLE | PRECIPITATION | RAIN |
| YARD WASTE | INFILTRATION | SNOW |
| PET WASTE | EVAPORATION | PAINT |
| LITTER | RUNOFF | RIVER |
| COMPOST | POLLUTION | WATER |

This message is brought to you by the
 Yakima County Regional Stormwater Working Group



Additional information can be found at: <http://www.yakimacounty.us/Stormwater/>

To report a suspected illicit discharge in Sunnyside, Union Gap, Yakima,
 or Yakima County, call: (509) 574-2300
 or e-mail PublicServicesIllicitDischarge@co.yakima.wa.us

Word Scramble

Pollution is carried by stormwater to our streams where it hurts many living things. Unscramble the words below to find some of the life affected by stormwater pollution. Use the picture on page 8 to help you and color each thing on page 8 that you unscramble here.

EPEPLO _____

ORGFS _____

HFSI _____

USBG _____

ERDE _____

UKSCD _____

IDRBS _____

SNAPLT _____

UTRSTEL _____

BRATBIS _____

SEPT _____

WHERE DOES WATER COME FROM?

Color the sun yellow.

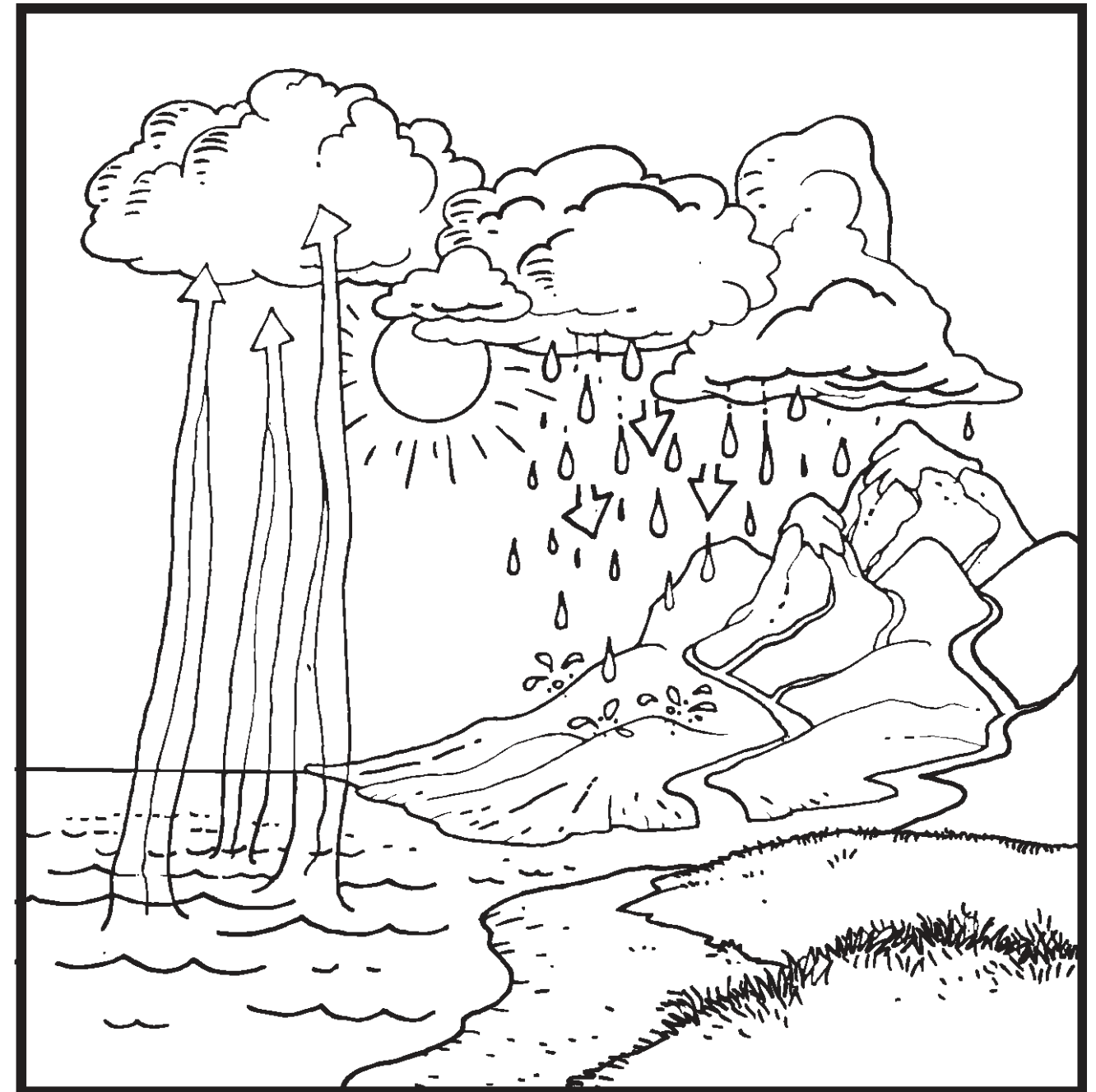
Color the clouds gray.

Color the rain blue.

Color the mountains brown.

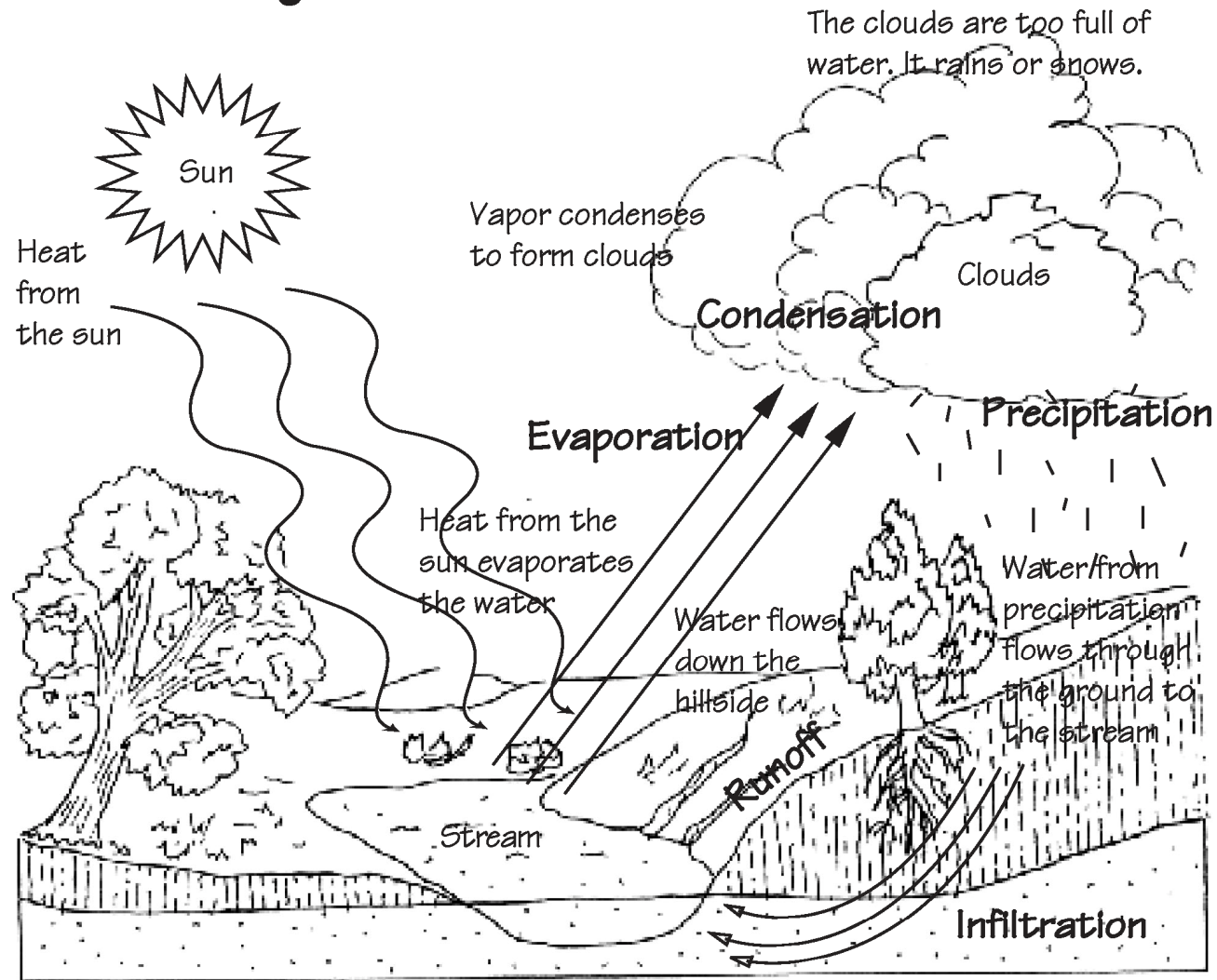
Color the streams and the rivers blue.

Color the arrows blue.



Water moves in a cycle. Water falls to earth as rain, snow, and other forms of precipitation. It evaporates into the air, forms clouds, and falls back to earth again as fresh water.

Water Cycle



MATCH 'EM

Match the words to the meanings

- A: When the rain reaches the earth it flows across the land into lakes, streams and oceans.
- B: The sun heats surface water. The water becomes vapor that rises into the atmosphere.
- C: Liquid is heavier than vapor. Gravity pulls the liquid down to earth as rain or snow.
- D: Water vapor forms clouds. When the clouds cool, the vapor becomes liquid.

- ___ EVAPORATION
- ___ CONDENSATION
- ___ PRECIPITATION
- ___ RUNOFF

WHO LIVES IN A WATERSHED?

A watershed is the land that water flows across or under on its way to a stream, river, lake or ocean. Water runs to the lowest point in the watershed.

At the bottom of the page, list the things in this picture that live in a watershed.



_____	_____
_____	_____
_____	_____
_____	_____
_____	_____

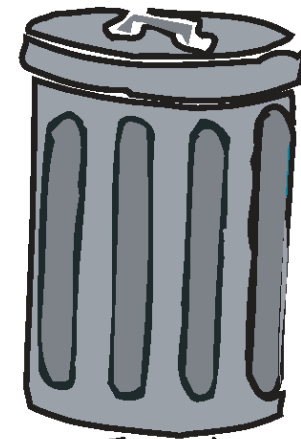
Color Me



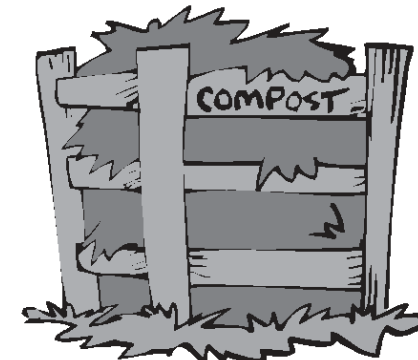
Matching

Proper disposal of our waste keeps it out of our stormsewer systems and our streams.

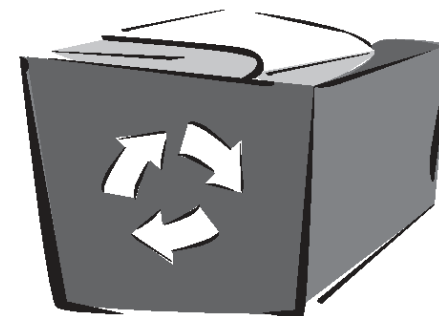
Draw a line from the waste to the proper disposal place.



Trash



Compost



Recycle



Fill in the Blanks

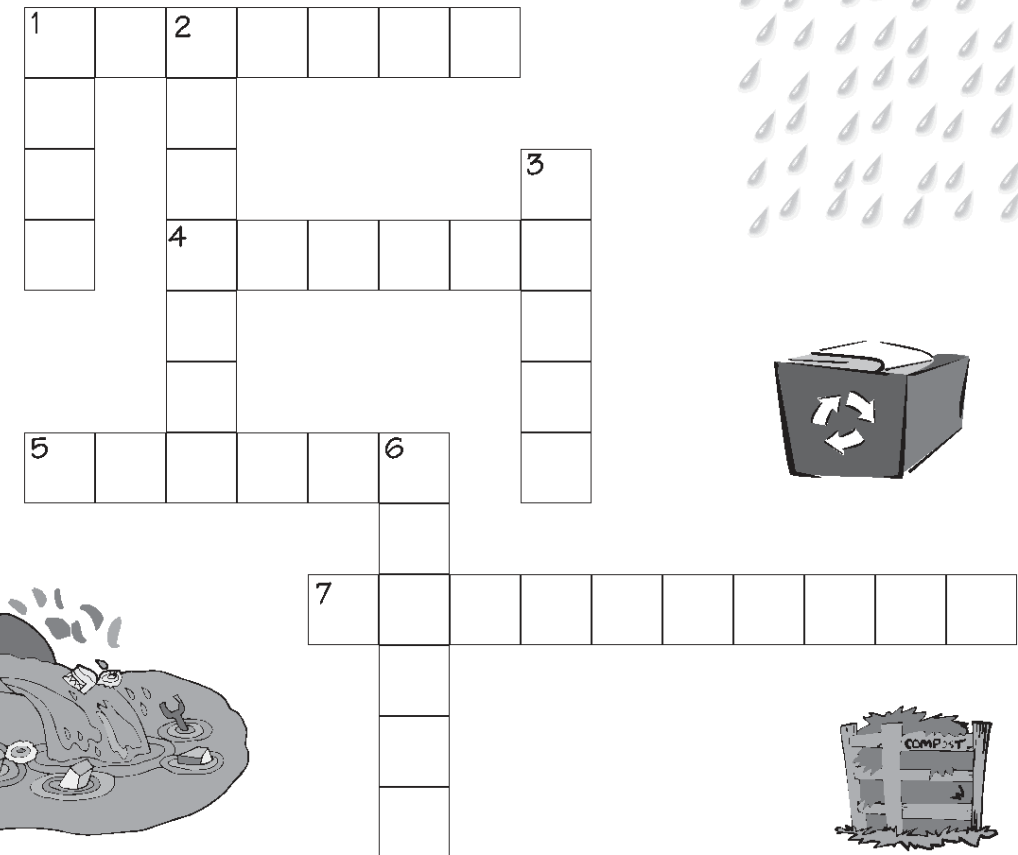
Use the words from the list below to complete the tips on how each of us can help prevent stormwater pollution.

- _____ the car on the lawn or at the car wash, so dirt, oil and soap don't end up in the storm drain.
- _____ your parents take leftover paint and antifreeze and old batteries to a household hazardous waste collection facility.
- _____ waste by recycling all items possible, like glass, plastic, aluminum cans and newspapers.
- _____ the driveway instead of hosing it off to keep debris out of the storm sewer.
- Ask your parents to _____ used motor oil.
- _____ pet waste and put it in the trash rather than leave it on the ground.
- Make _____ out of grass clippings, leaves, fruit rinds, used coffee grounds and use it in your garden for nutrients.
- Water the lawn for _____ periods to prevent runoff.

PICK UP
REDUCE
SWEEP
WASH

SHORTER
RECYCLE
HELP
COMPOST

Crossword



Across

- What should be done with used oil, tires, glass and newspaper
- Who can help prevent stormwater pollution
- Trash that's on the ground
- Heat from the sun _____ water



Down

- Water that falls to the earth (precipitation) in the summer
- What is made of leaves, grass clippings and fruit rinds
- Trash that's on the ground can end up in the storm _____
- Trash that's on the ground can end up in the storm sewer and then in our _____.