



City of Selah

NOTICE OF CONSTRUCTION

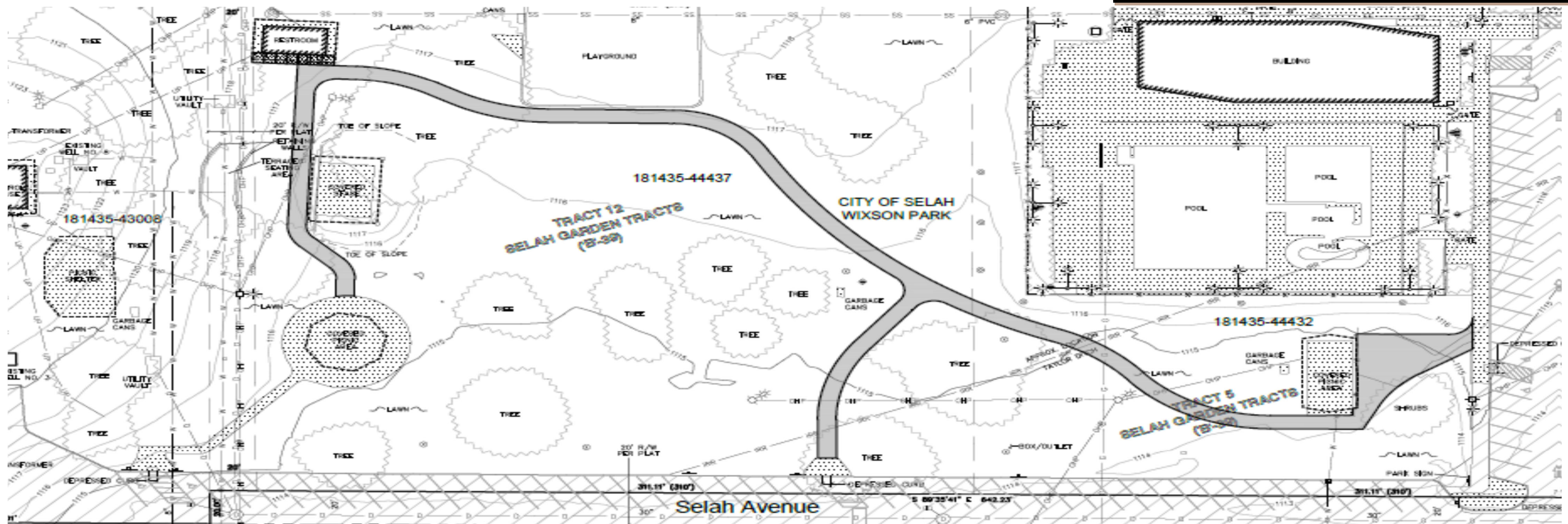
Wixson Park Pathway Project

Important Project Information:

- The City received a Yakima County ARPA Grant to install an ADA Pathway in Wixson Park.
- In order to safely construct the ADA Pathway, Wixson Park will be closed beginning September 20, 2024 until October 31, 2024.

Preliminary Construction Schedule:

Construction Start: September 23, 2024
 (earliest date)
 Construction End: October 31, 2024



Questions: Contact Public Works Director Rocky Wallace at (509) 698-7365 or Rocky.Wallace@selahwa.gov
 Project information will be regularly posted on the City's Website on the Public Works page.