

# Draft Revised Future Land Use Map



**CITY OF SELAH  
WASHINGTON**  
September 2018

## LEGEND

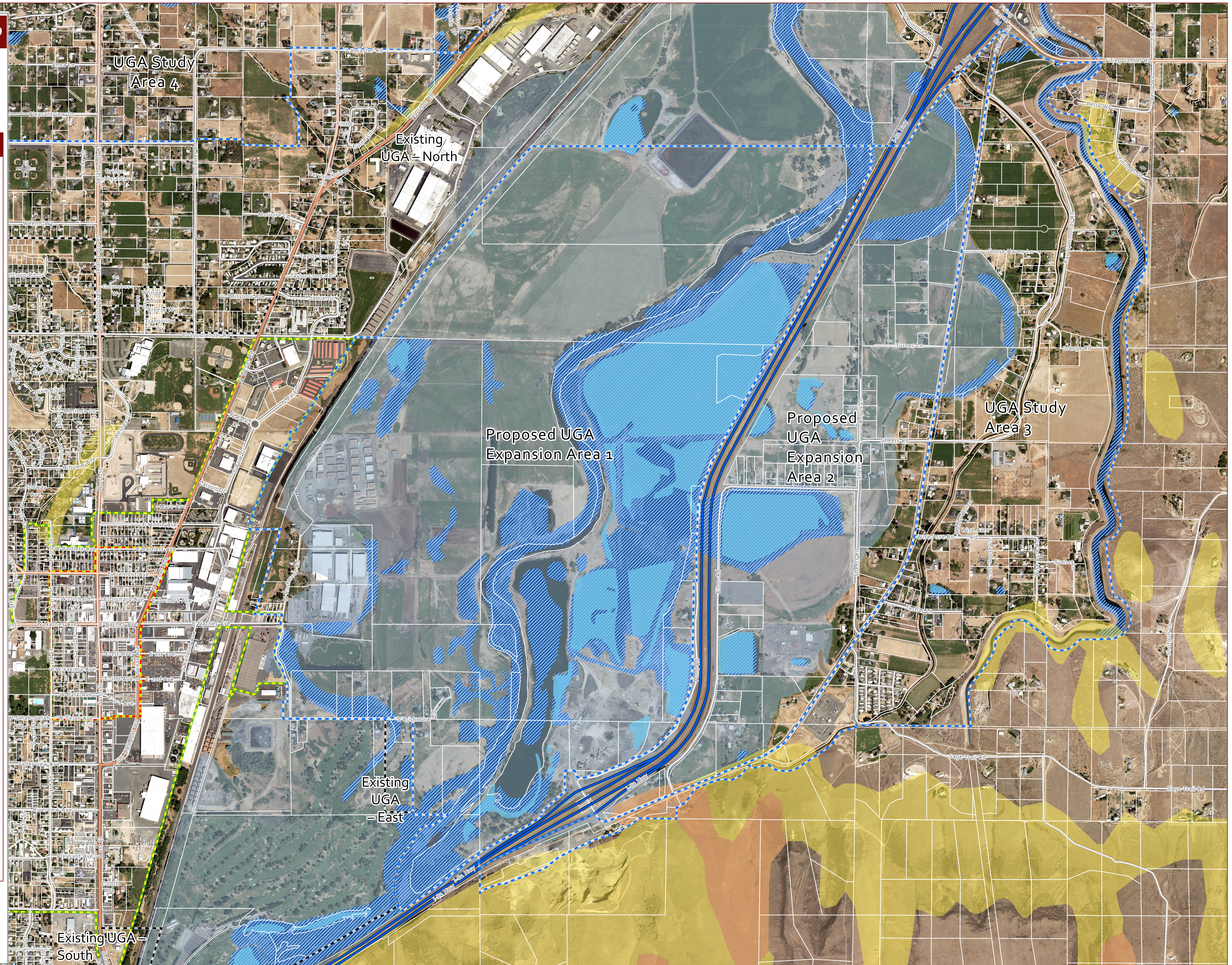
### Future Land Use

- Proposed UGA Expansion Area
- Proposed UGA
- Target Area
- Central Urban Area
- City Limits
- UGA
- Floodway and 100yr Floodplain
- Lakes/Pond
- Landslide Hazard Area
- Steep Slopes
- Wetland

### UGA and Potential UGA Additions

Existing UGA - North: 1,020 acres  
Existing UGA - South: 128 acres  
Existing UGA - East: 12 acres

Proposed UGA Expansion Area 1: 1,164 acres  
Proposed UGA Expansion Area 2: 508 acres  
UGA Study Area 3: 542 acres  
UGA Study Area 4: 2,012 acres



0 0.25 0.5 Miles

Disclaimer: The information on this map is intended for general reference use only. The City of Selah, and those operating on their behalf, cannot guarantee the accuracy or usefulness of the information shown. The user of this map assumes all responsibility for inappropriate use of the information provided herein.

GXT Consulting LLC