

Draft Revised Future Land Use Map



**CITY OF SELAH
WASHINGTON**

September 2018

LEGEND

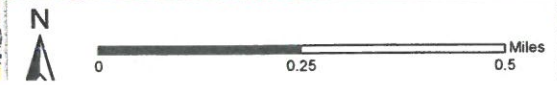
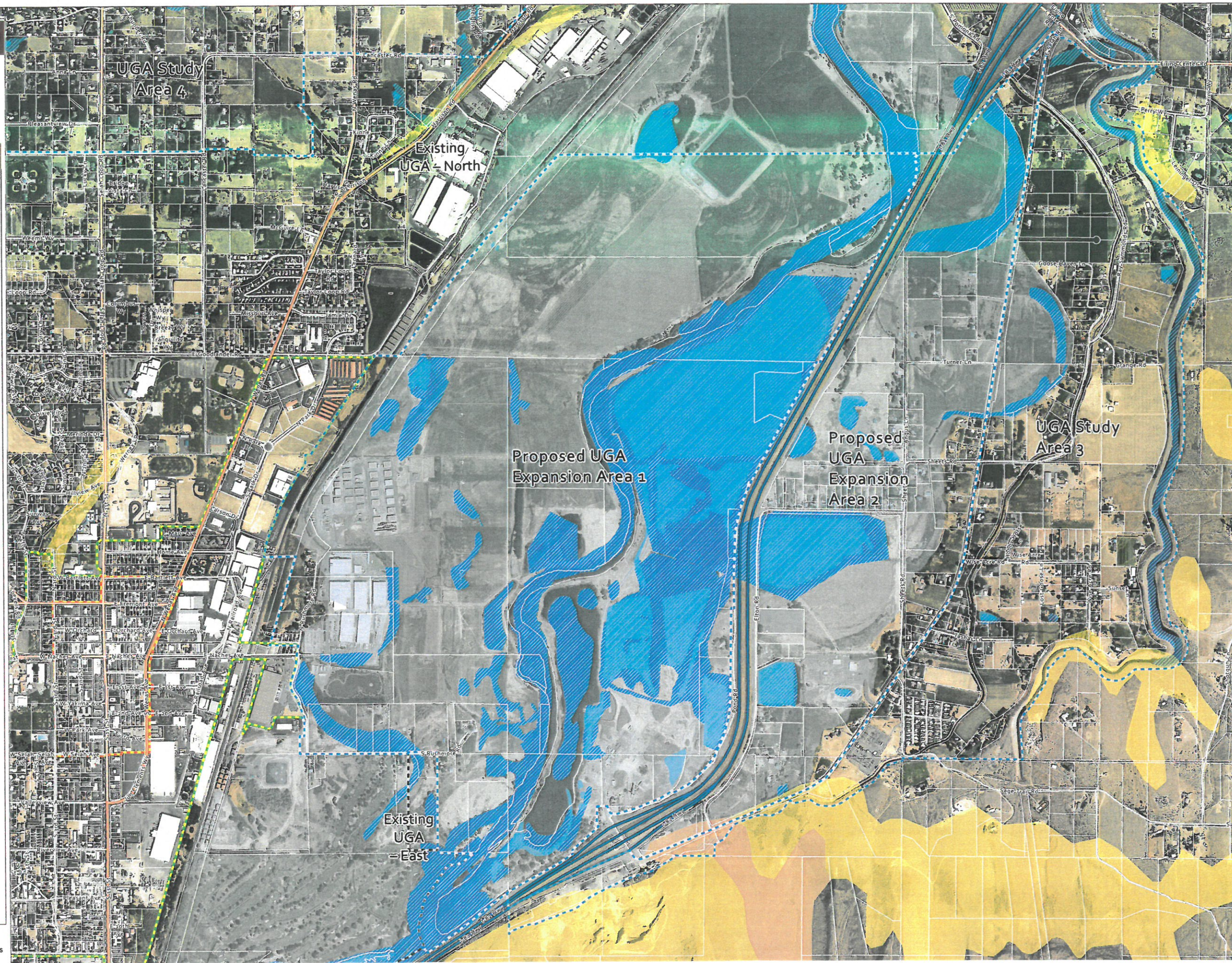
Future Land Use

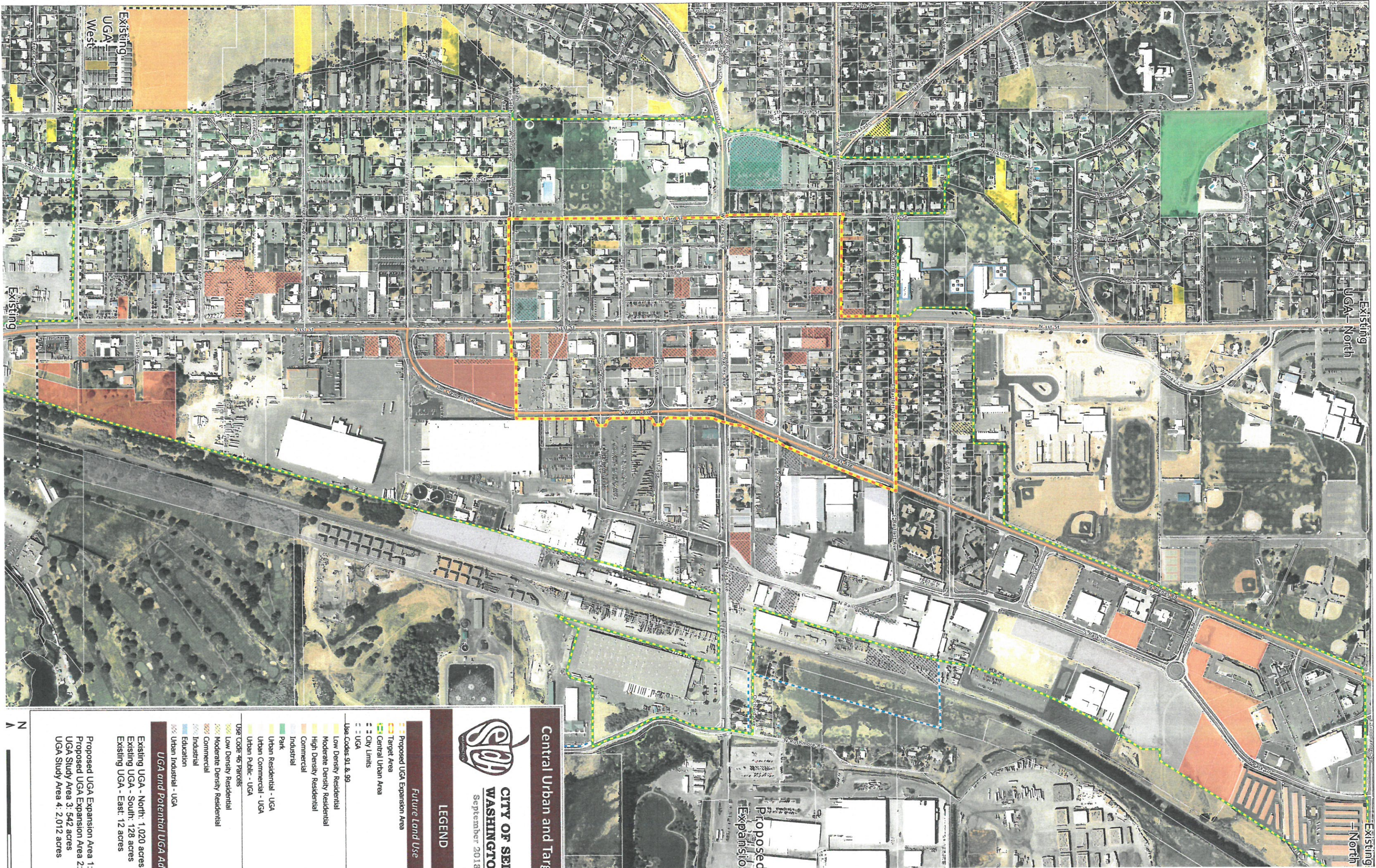
- Proposed UGA Expansion Area
- Proposed UGA
- Target Area
- Central Urban Area
- City Limits
- UGA
- Floodway and 100yr Floodplain
- Lakes/Pond
- Landslide Hazard Area
- Steep Slopes
- Wetland

UGA and Potential UGA Additions

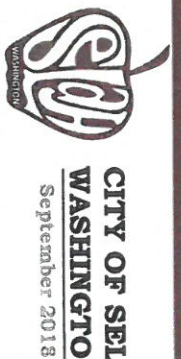
Existing UGA - North: 1,020 acres
 Existing UGA - South: 128 acres
 Existing UGA - East: 12 acres

Proposed UGA Expansion Area 1: 1,164 acres
 Proposed UGA Expansion Area 2: 508 acres
 UGA Study Area 3: 542 acres
 UGA Study Area 4: 2,012 acres





Central Urban and Target Urban



LEGEND

Future Land Use

- Proposed UGA Expansion Area
- Target Area
- Central Urban Area
- City Limits
- UGA
- UGA

- Use Codes 91 & 99
- Low Density Residential
 - Moderate Density Residential
 - High Density Residential
 - Commercial
 - Industrial
 - Park
 - Urban Residential - UGA
 - Urban Commercial - UGA
 - Urban Public - UGA

- Use Code 46 Parcels
- Low Density Residential
 - Moderate Density Residential
 - Commercial
 - Industrial
 - Education
 - Urban Industrial - UGA

- ### UGA and Potential UGA Additions
- Existing UGA - North: 1,020 acres
 - Existing UGA - South: 128 acres
 - Existing UGA - East: 12 acres

- Proposed UGA Expansion Area 1: 1,020 acres
- Proposed UGA Expansion Area 2: 1,020 acres
- UGA Study Area 3: 542 acres
- UGA Study Area 4: 2,012 acres



Draft Revised Future Land Use Map



**CITY OF SELAH
WASHINGTON**
September 2018

LEGEND

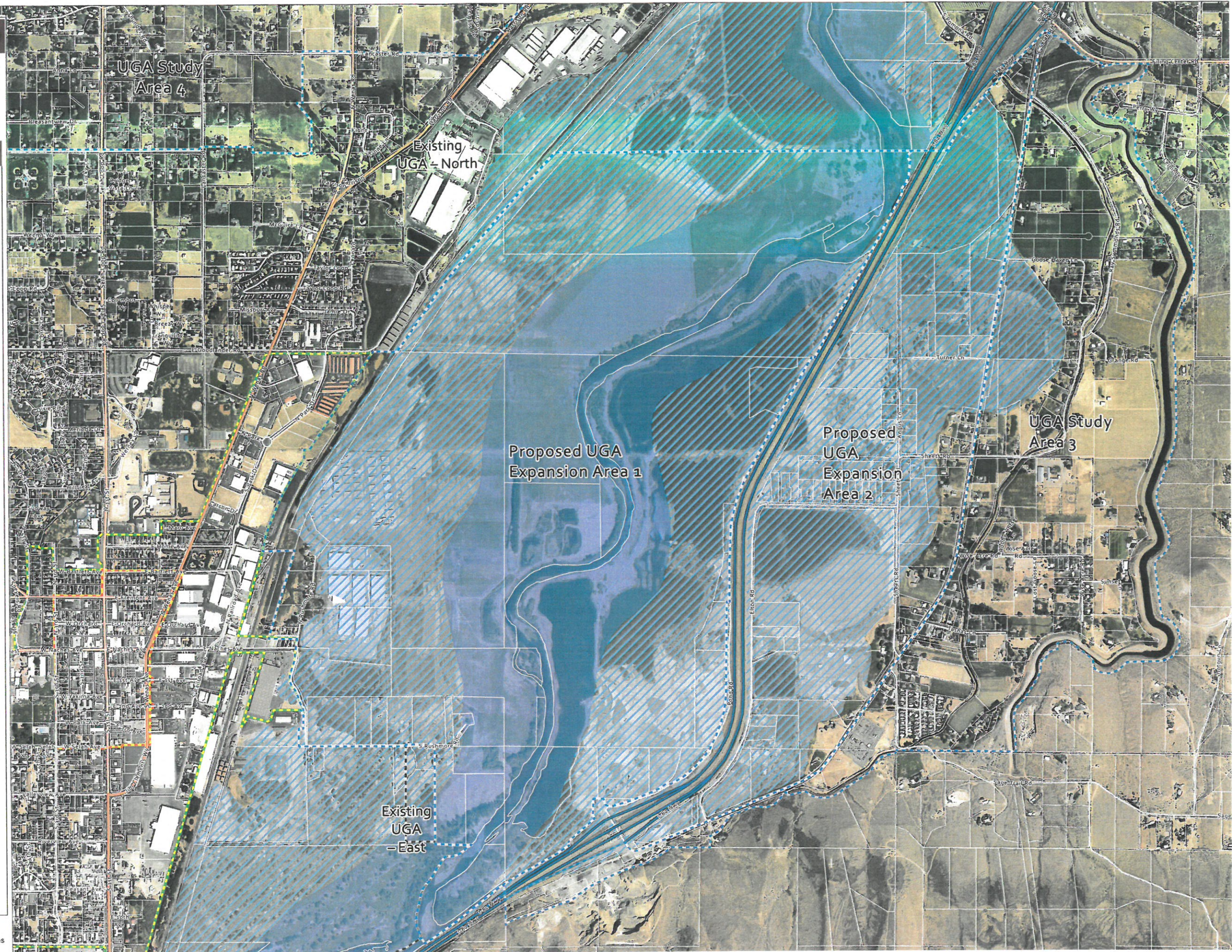
Future Land Use

- Proposed UGA Expansion Area
- Proposed UGA
- Target Area
- Central Urban Area
- City Limits
- UGA
- FEMA 100 yr Floodplain
- AE FLOODWAY
- AE

UGA and Potential UGA Additions

Existing UGA - North: 1,020 acres
Existing UGA - South: 128 acres
Existing UGA - East: 12 acres

Proposed UGA Expansion Area 1: 1,164 acres
Proposed UGA Expansion Area 2: 508 acres
UGA Study Area 3: 542 acres
UGA Study Area 4: 2,012 acres



Draft Revised Future Land Use Map



**CITY OF SELAH
WASHINGTON**
September 2018

LEGEND

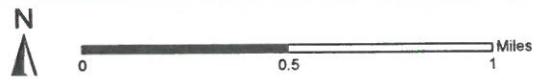
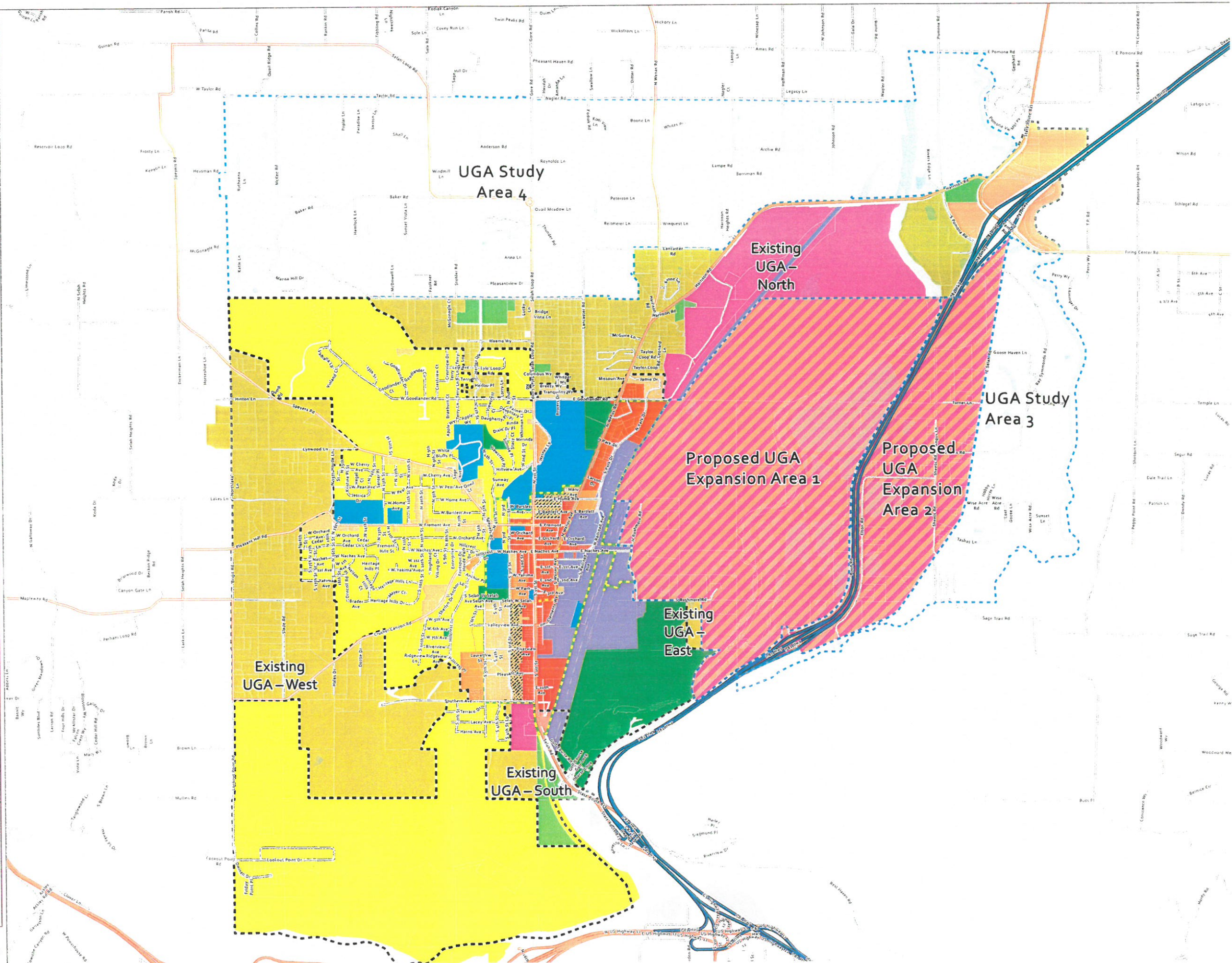
Future Land Use

- Low Density Residential
- Moderate Density Residential
- High Density Residential
- Commercial
- Industrial
- Education
- Park
- Urban Residential - UGA
- Urban Commercial - UGA
- Urban Industrial - UGA
- Urban Public - UGA
- Proposed Commercial
- Proposed UGA Expansion Area
- Proposed UGA
- Target Area
- Central Urban Area
- City Limits
- UGA

UGA and Potential UGA Additions

Existing UGA - North: 1,020 acres
 Existing UGA - South: 128 acres
 Existing UGA - East: 12 acres
 Existing UGA - West: 778 acres

Proposed UGA Expansion Area 1: 1,164 acres
 Proposed UGA Expansion Area 2: 508 acres
 UGA Study Area 3: 542 acres
 UGA Study Area 4: 2,012 acres



Draft Revised Future Land Use Map



**CITY OF SELAH
WASHINGTON**
September 2018

LEGEND

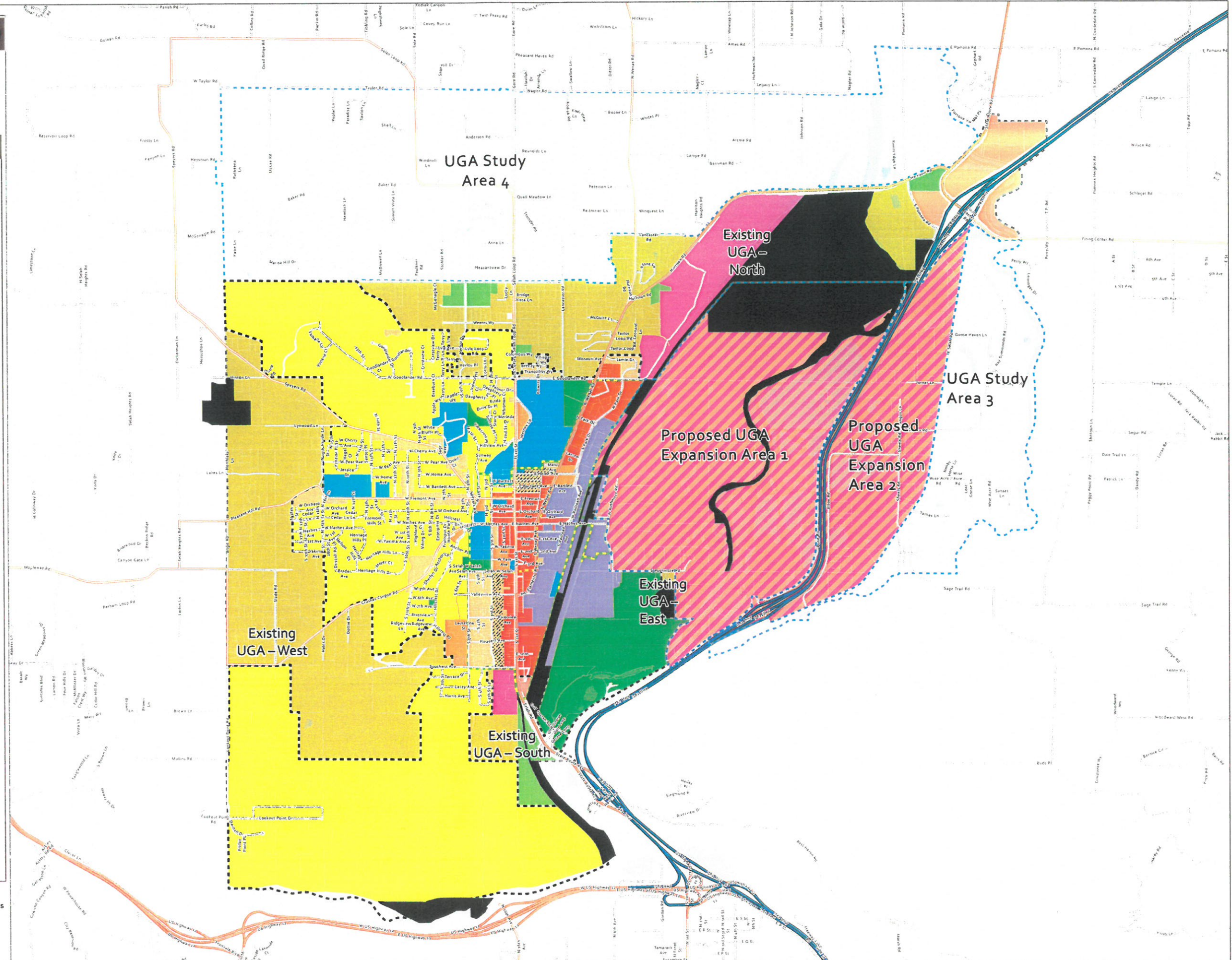
Future Land Use

- Low Density Residential
- Moderate Density Residential
- High Density Residential
- Commercial
- Industrial
- Education
- Park
- Urban Residential - UGA
- Urban Commercial - UGA
- Urban Industrial - UGA
- Urban Public - UGA
- Proposed Commercial
- Proposed UGA Expansion Area
- Proposed UGA
- Target Area
- Central Urban Area
- City Limits
- UGA
- Parcels_Spanning_Multiple_Areas

UGA and Potential UGA Additions

Existing UGA - North: 1,020 acres
 Existing UGA - South: 128 acres
 Existing UGA - East: 12 acres
 Existing UGA - West: 778 acres

Proposed UGA Expansion Area 1: 1,164 acres
 Proposed UGA Expansion Area 2: 508 acres
 UGA Study Area 3: 542 acres
 UGA Study Area 4: 2,012 acres



N

0 0.5 1 Miles

Disclaimer: The information on this map is intended for general reference use only. The City of Selah, and those operating on their behalf, cannot guarantee the accuracy or usefulness of the information shown. The user of this map assumes all responsibility for inappropriate use of the information provided herein.

GXT Consulting LLC

