

SUBMITTAL TRANSMITTAL

Date Sent: 7/17/2020

Submittal No.: 04.1

Item: Traffic Control Plan

Section No.: 1-10.5

Project Name: WEST GOODLANDER ROAD IMPROVEMENTS

Project No.: 20026C / 20027C

Owner: CITY OF SELAH

Engineer: HLA ENGINEERING AND LAND SURVEYING, INC.

Contractor: CENTRAL PAVING, LLC

Phone: (509) 929-1044 Fax: _____


Supplier: Central Paving, LLC

Phone: 509-929-1044 Fax: _____

Initial each line:

- | | | |
|----|---|-----------|
| a. | Contractor verifies that materials and equipment described in this submittal conform to the requirements of the Contract Documents. | <u>JG</u> |
| b. | This submittal does not deviate from the Contract Documents. | <u>JG</u> |
| c. | This submittal does not conflict with other submittals or the Contract Documents. The submittals have been coordinated. | <u>JG</u> |

The Prime Contractor has determined and verified all quantities, dimensions, field construction criteria, material catalog numbers and similar data, or assumes full responsibility for doing so. I have reviewed and coordinated each submittal with the requirements of the Contract Documents.



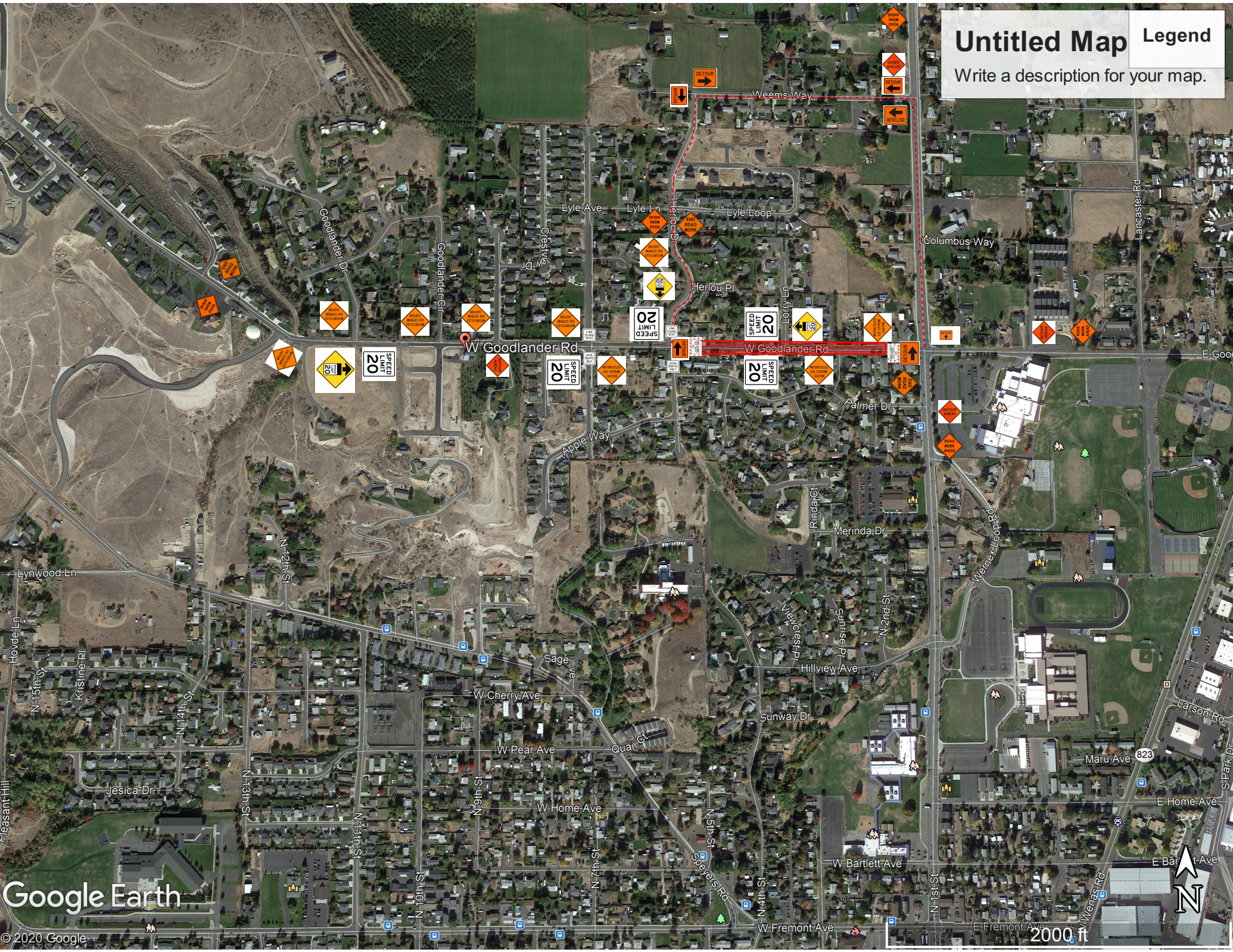
Signature

(Each copy of the submittal shall be collated and assembled by the Prime Contractor. Each copy of the submittals shall have the Submittal Transmittal attached to it. Each Catalog cut shall be marked with the bid item that the Submittal is intended for in the upper right hand corner).

Untitled Map

Legend

Write a description for your map.



Google Earth

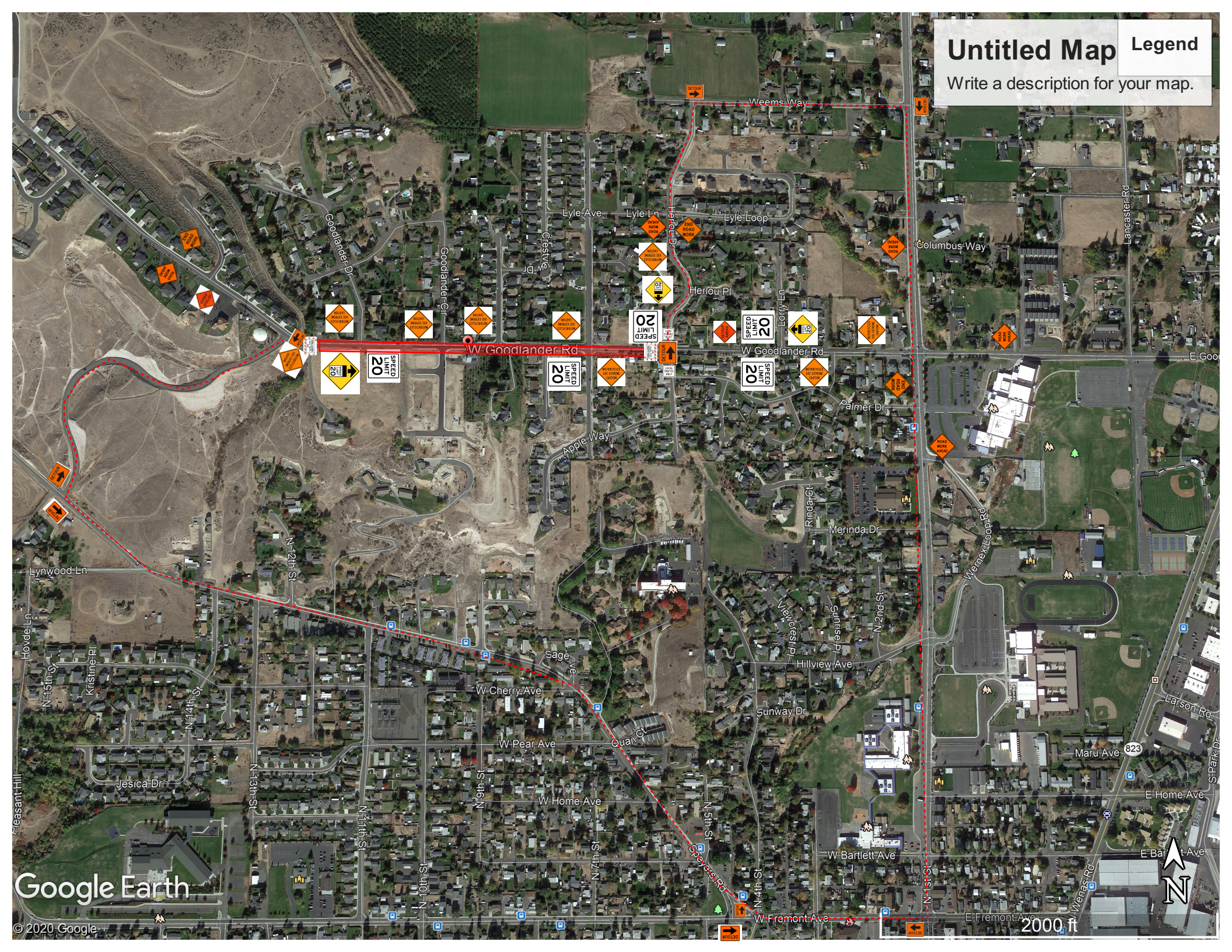
© 2020 Google



2000 ft

Untitled Map Legend

Write a description for your map.



© 2020 Google

2000 ft