

Selah Fire Department



2020 Year End Report

Prepared By: Fire Chief Jim Lange and staff

INDEX

	Page
MESSAGE FROM THE CHIEF.....	3
DEPARTMENT HISTORY.....	4
OUR RESPONSE AREA.....	5
ELECTED OFFICALS AND FACILITIES.....	6-7
MISSION STATEMENT.....	8
ORGANIZATION CHART.....	9
CALLS FOR SERVICE.....	10
PUBLIC EDUCATION.....	11-13
OTHER ACTIVITIES.....	14
TRAINING.....	15-16
FIRE MARSHAL/INSPECTIONS.....	17
APPARARUS.....	18
EQUIPMENT.....	19
AWARDS AND RECOGNITIONS.....	20

Message from the Chief

On behalf of the career and volunteer members of the **Selah Fire Department**, it is my privilege to present the 2020 Annual Report. The Selah Fire Department is committed to enhancing the quality of life for present and future generations of our community. We protect lives and property through Public Education, Fire Suppression, and Emergency Medical Services. Each member of our department is dedicated to serving our community with honesty, integrity and respect for each other and all we serve. We are grateful for the continued support from our community, city and district administration, elected officials, and to all city departments that work to make our community great. Without your support, meeting our missions would not be possible.

As we looked to the future, we recognized several challenges for the operation and maintenance of the department. The first being funding to maintain our current level of service and second, staffing to meet the needs of a growing community. Early in 2019 the decision was made to put it to a vote of the people we serve. We were humbled when they overwhelmingly showed their support by passing a levy in the city and in the district of .35 per thousand of assessed valuation. Along with existing funding sources, this should safeguard the operation of the department for many years.

Our organization is focused on providing the safest work environment possible for your Fire/EMS responders. We diligently strive to be the most effective and efficient public safety organization while giving consideration to the ever changing environment and the necessary evolution of our service. As our community continues to grow, we embrace our responsibility of providing the highest level of care and service to meet the challenges and demands of our community.

Finally, I express a sincere "thank you" to all the members of the Selah Fire Department. I take great pride in representing such an outstanding group of individuals that continually demonstrate a commitment to the success of this department.

I would like to thank the commissioners of Fire District 2 and the City of Selah Mayor and council for allowing me to serve as your fire chief.

Respectfully,

James R. Lange

DEPARTMENT HISTORY

On January 8, 1940, the Selah Town Council signed Ordinance #90, which provided for the organization, maintenance and regulation of a fire department in the Town of Selah, Washington. Thus was born the Selah Fire Department.

S.C. Justice was appointed as the Fire Chief of the new department consisting of 1 truck, 5 officers and 14 volunteer firefighters.

In 1946 a Rural Fire District (RFD) later to be known as Yakima County Fire Protection District #2 was formed and manned by the Selah Fire Department. This includes the area North of Lookout Point between Selah Heights and the Yakima River, North to Adobe Hill and the hill tops South of Wenas Lake Dam.

East Selah was annexed into Yakima County Fire Protection District #2 in 1960 and the upper Wenas Valley in 1975 creating a combined area 26 miles long and 7 miles wide at its widest point.

The City of Selah and Yakima County Fire Protection District #2 legally combined their fire departments in 1966 creating the department that now exists.

This move was one of the most progressive actions taken since the creations of both fire departments. It has saved the taxpayers thousands of dollars by eliminating duplication in administrative cost, equipment and building needs, operational costs and utilization of manpower.

From this simple beginning, the department now serves an area of 65 square miles and an estimated population of just over 20,000.

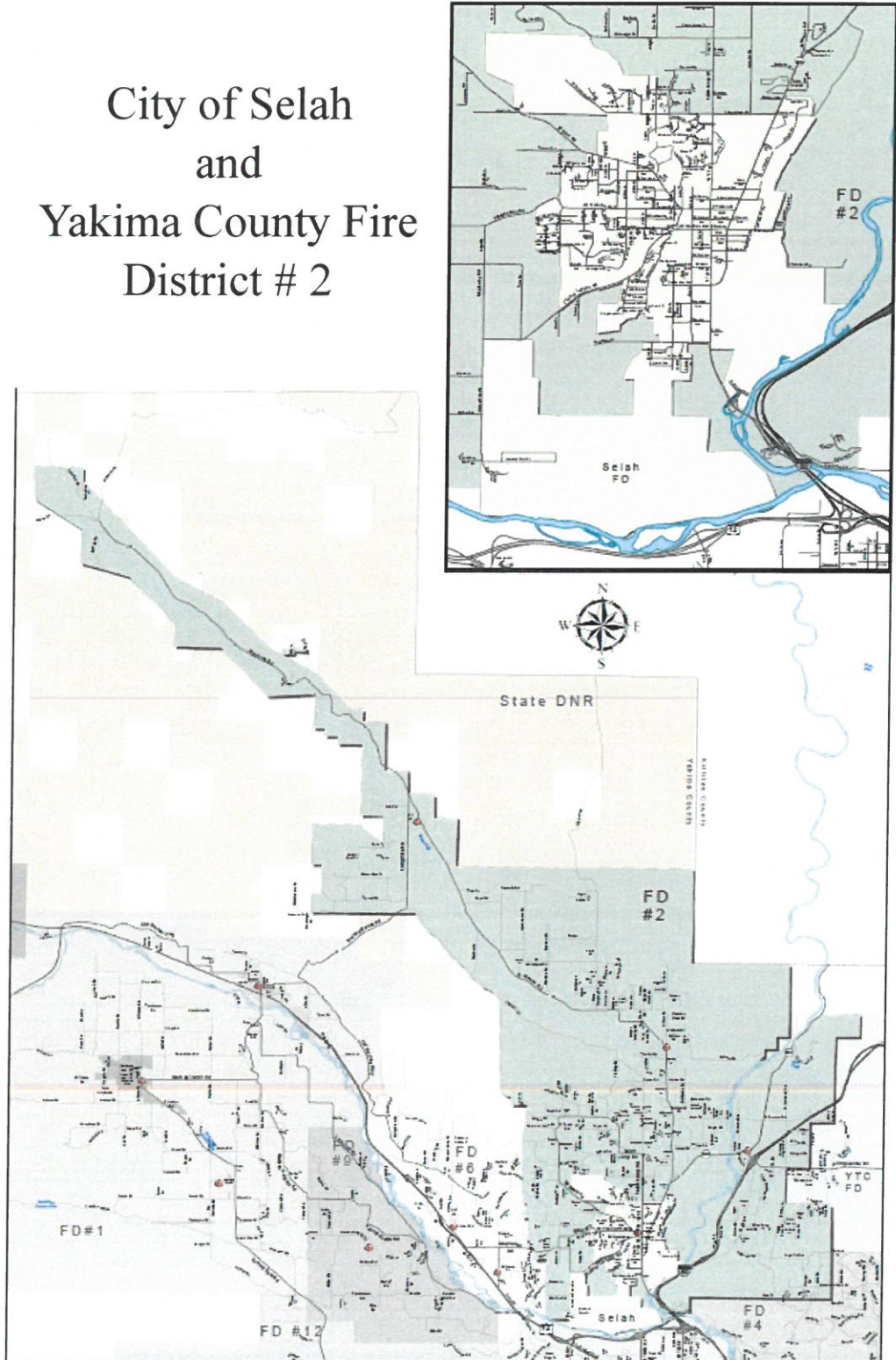
In 1940 the Selah Fire Department responded to 6 fire alarms, 4 of which were actual fires, with a total property loss of \$75.00. In the past 3 years, the Selah Fire Department has responded to an average of 1,664 calls per year.

SELAH FIRE DEPARTMENT RESPONSE AREA

City of Selah and Yakima County Fire District # 2

The Selah Fire Department's response area covers approximately 65 square miles.

Roughly 5 square miles and a population of 8,300 within the city limits of Selah and 60 square miles and a population approximately 12,000 within Fire District #2.



YAKIMA COUNTY FIRE PROTECTION DISTRICT #2 COMMISSIONERS

Chairman.....Dan Boyle

Commissioner.....Brad Helms

Commissioner.....Rex Reed

Secretary.....Shelly Bartlett

The Fire Commissioners form a board elected by the public to represent their fire district.

Yakima County Fire District 2 commissioners serve six-year terms staggered every two years. Any resident, 18 years or older, who lives within the district boundaries are eligible to run for an open position on the board.

All regular meetings are held at 6:30 p.m. on the second Tuesday of every month at Station 21, 206 W. Fremont Avenue. Meetings are open to the public and offer residents an opportunity for citizen input.

SELAH FIRE DEPARTMENT'S DISTRICT STATIONS



STATION 22
1830 Harrison Rd.
Yakima, WA 98901

STATION 24
4251 N. Wenas Rd.
Selah, WA 98942



STATION 26
121 Fink Rd.
Selah, WA 98942

CITY OF SELAH MAYOR, ADMINISTRATOR AND COUNCIL

Mayor

Sherry Raymond

City Administrator

Donald Wayman

Council Members

Kevin Wickenhagen

Jacquie Matson

Suzanne Vargas

Clifford Peterson

Roger Bell

Michael Costello

Russell Carlson

**Selah has a strong Mayor, council
form of government.**

SELAH FIRE DEPARTMENT'S CITY STATION



**Station 21
206 W. Fremont Ave
Selah, WA 98942**



SELAH FIRE DEPARTMENT MISSION, VISION AND MOTTO

OUR MISSION IS THE PROTECTION OF LIFE AND PROPERTY, AND TO REDUCE THE FREQUENCY AND MAGNITUDE OF PERSONAL TRAUMA AND PROPERTY LOSS. TO EFFECTIVELY MIGIGATE THE KNOWN AND UNKNOWN EMERGENCIES THAT WILL OCCUR



VISION

To position the fire department securely (operationally, financially, and politically) through and beyond our current state of growth, while creating a predictable and sustainable future.

MOTTO

Honesty - Integrity - Respect

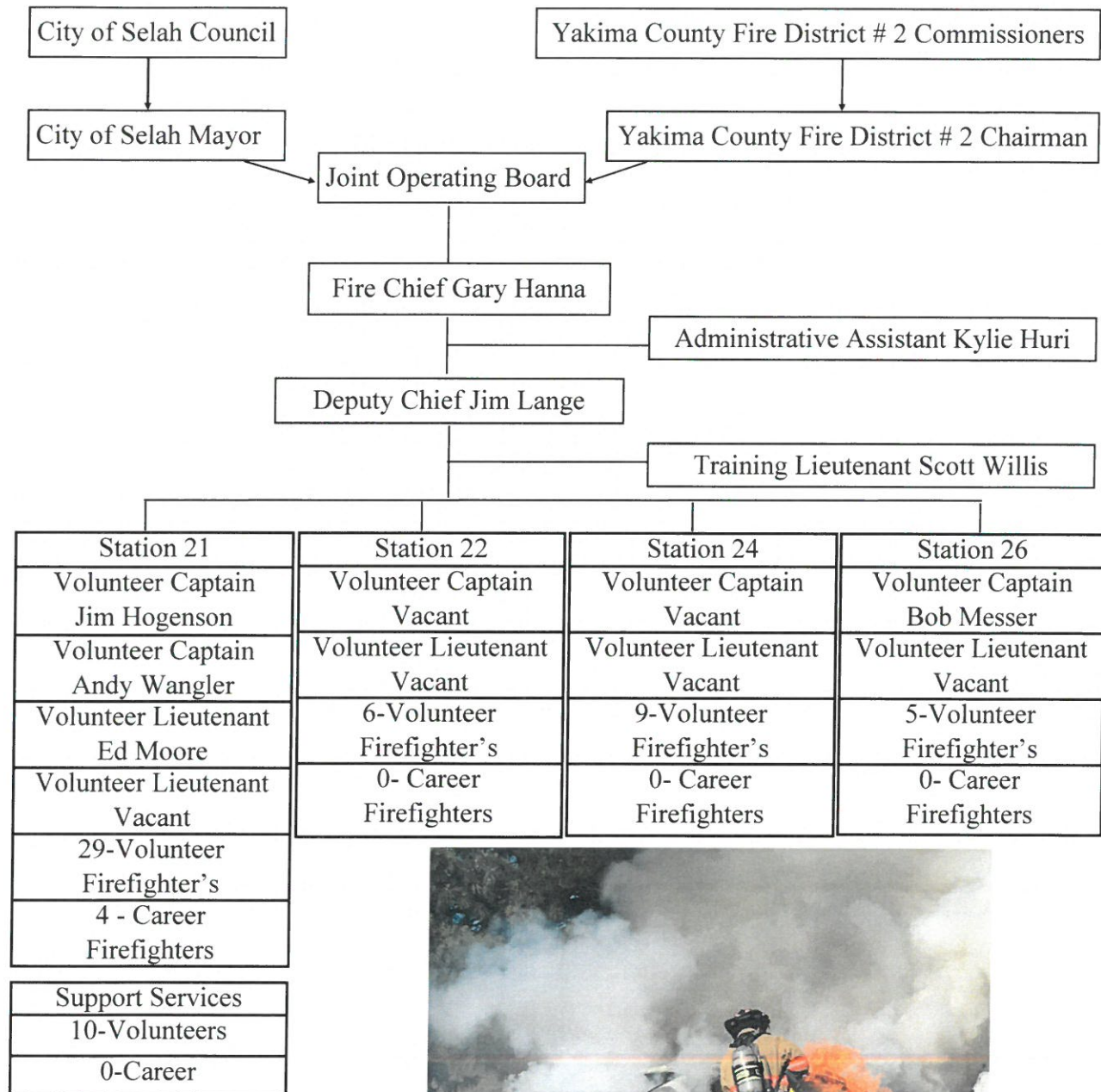
We value the public's trust and are committed to honest and ethical behavior. We hold ourselves accountable to this value. We believe in a personal commitment to the organization and community. Self-discipline is the foundation for managing behavior.

We are a fire department family. We are committed and accountable to each other because our lives depend on it. We value the role each member plays in our organization. We respect those that came before us and will strive to make the organization better for those who follow.

In order to carry a positive action we must develop here a positive vision.

Dalai Lama

FIRE DEPARTMENT ORGANIZATIONAL CHART AND STAFFING LEVEL



**Only those who have
learned the power of
sincere and selfless
contribution experience
life's deepest joy:
true fulfillment.**

Tony Robbins



CALLS FOR SERVICE

The Selah Fire Department Responded to 1596 Calls in 2020

BREAKDOWN OF MAJOR INCIDENT TYPES

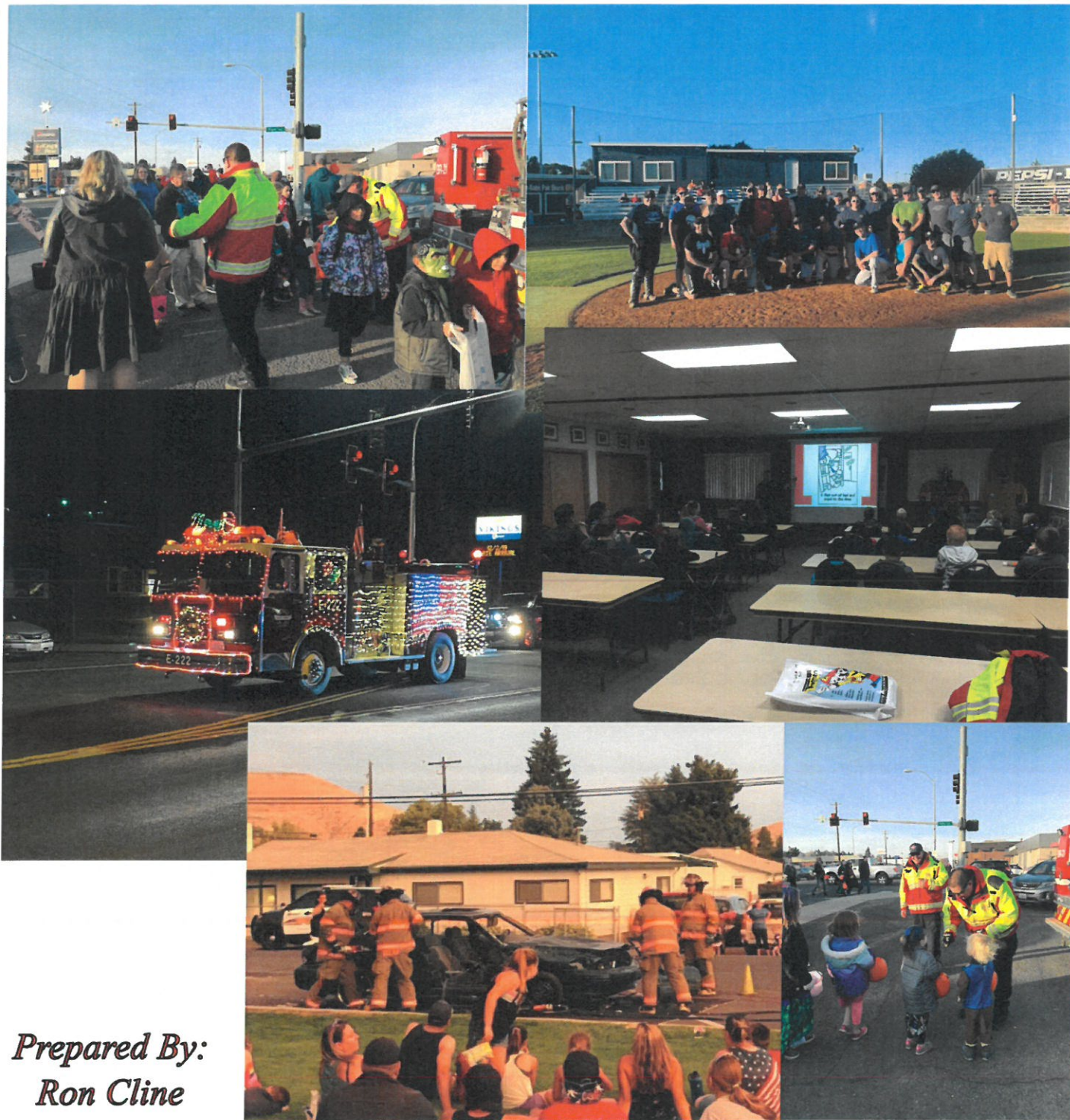
	Emergency Medical	Motor Vehicle	Fires in Structures	Grass/Brush Fires	Vehicle Fires	Other Fires	All Other Types	TOTALS	
City of Selah	477	20	5	6	2	7	136	653	40.9%
Yakima County Fire District #2	629	46	18	37	15	12	186	943	59.1%
								1,596	4.64



Overlapping Incident's	284	17.8%
Mutual Aid Received	14	
Mutual Aid Given	10	



Public Education/ Community Service



*Prepared By:
Ron Cline*

Tell me and I forget. Teach me and I remember. Involve me and I learn.

Benjamin Franklin

Public Education/ Community Service

Fire Safety classes and Station Tours

2020 Fire Prevention and Public Education **CANCELLED**. Firefighter Ron Cline and the fire prevention program had big plans for 2020, not only to invite the John Campbell 2nd graders and the Robert Lince Kindergartners, but also those students that are being homeschooled. Firefighter Cline used social media to invite them to the station. This idea was met with a great response from the community of Selah and from around the Yakima area as well. Unfortunately, Covid19 shut all that down. The Fire Prevention program had all the fire prevention material handouts but no classes to hand them out too. FF Cline put together grab bags with all the material inside and placed them on a table outside the front door of Station 21 for families to stop by and pick up. About 200 grab bags were given away to those that stopped by.

Exit Drills In The Home (E.D.I.T.H. House)

EDITH House is a travel trailer configured into two sections. One half is for watching a fire prevention video from stadium like benches and fire prevention in the kitchen. The other half is where the children actually get to lay down on a bed, hear the smoke detector go off, crawl out of bed to the bedroom door, feel the door for heat, see the smoke coming from underneath the door, then crawl to the window to use their second means of escape. Students then proceed to the “neighbors” house where they call 911. Students use a phone that calls into the EDITH House operator where they are asked a series of question as if actually calling 9-1-1. The most important one being their address. This simulation gives the student the confidence in knowing that if there was an emergency they could call for help.

Unfortunately, EDITH, was **CANCELLED** too. The Selah Fire Department could not grantee the safety of the children, teachers, and parents. With great regret those second grade students did not get the experience of EDITH.

National Night out/Trunk or Treat

National Night out has been the fire departments night to put on an extrication demonstration. The extrication equipment is used to cut apart a car. The roof of the car is removed in a matter of minutes and doors are pried open to allow emergency responder’s access to the injured patient. During this event the public is allowed to get an up close look at Engine 21, the department’s newest engine. **CANCELLED**

Trunk or Treat, the communities Halloween party, where hundreds of pounds of candy is handed out for kids in a safe environment, from all the local businesses and community groups.

CANCELLED

The Selah Fire Department looks forward to the time that these programs and events can be held safely again.

Public Education/ Community Service

This engine carries an array of equipment including the “jaws of life” tools used in the demonstration. It’s a great night to showcase the equipment and the talents of the men and women that are trained to provide the best possible care for those in need.

Trunk or Treat has been an event for Selah Fire and Selah PD to get together to hand out candy to the children of Selah. This event provides a safe environment for our kids. Selah PD’s Missy Maki goes above and beyond to get candy donated and together we get to show how much we love our community.

Senior Lunches

This year the Selah Fire Department members were invited down to the Civic Center to help serve lunch to our Senior Citizens. Lunch is provided daily to seniors and given a meal to take home with them. While those there ate, the SFD members were able to sit down and enjoy conversation with them. It was a great way to serve and meet people in the Selah community. I hope that SFD is given this opportunity again.

Public/Fire Prevention Education

While some fire departments have had to reduce or eliminate their public education and safety programs due to funding cuts, our Selah fire department programs remain strong. Thanks to the commitment of our membership and the generosity of our local businesses through donations, we have been able to purchase all of the education materials needed to sustain our programs. These materials, along with the education we provide, were given to over 800 school children, scouting groups, adults and seniors in 2019.

In partnership with the Selah High School we were able to utilize students as patients in a mass causality incident and in simulated sports injuries. This partnership provides valuable training for our membership and an opportunity to educate these young adults.

We were once again invited to participate in the Selah Police Departments citizen’s academy. Participants were given an overview of what the fire department does on a daily basis. They learned how the department operates, the array of call types we respond on and many of the behind the scene functions we perform when not responding to emergency calls.

“It’s easier to prevent a fire than it is to put one out”

“Fire Prevention through Education Saves Lives”

Other Activities

BUILDING PROJECTS

Planning and bid process of the construction project at Station 22 at 1830 Harrison Road was completed in late 2020. The new construction is to re-build a storage building that was removed for the expansion of the station the year prior. The project will be to construct an adjacent building for training props and equipment storage.

HYDRANT INSPECTION AND TESTING

The fire department inspects, tests, lubricates and exercises the valves on all of the 407 fire hydrants within the city and private systems within the district on an annual basis. We also conduct fire flow testing every 5 years or as needed when changes are made to the water system. These are necessary to determine the maximum flow the water system can provide in the event of a fire. These calculations are used to determine the maximum square footage of residential and commercial buildings in a given geographical area. They also provide hard data to the cities engineering firm to enhance their computer model of the cities water system.

PUMP AND FIRE HOSE INSPECTION AND TESTING

Pump testing of our structural engines, and pressure testing, inspection and cleaning of fire hose is performed annually. These tests are performed to meet NFPA and WSRB requirements and to reduce the likelihood of failure in an emergency. The department has 6 structural engines and 3.5 miles of fire hose.

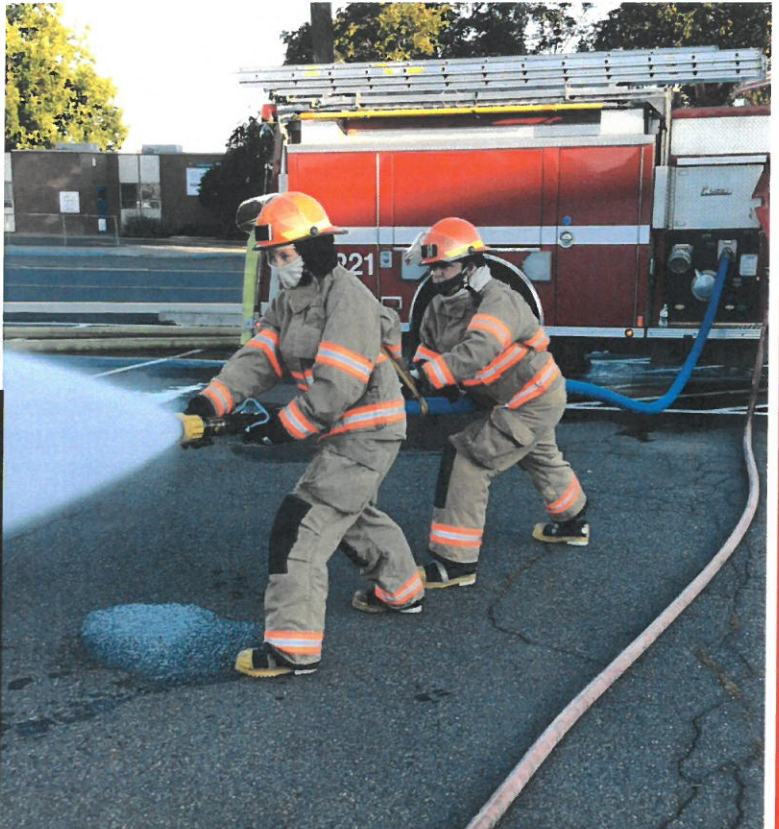


It's all fun and games....Until you have to pick it up!

Training

TRAINING IS A NEVER-ENDING
JOURNEY IN A FIREFIGHTER'S
CAREER OF SERVICE.

TO BE KNOWN AS A FIREFIGHTER
IS A TITLE OF PRIDE, BORN OF
ACCOMPLISHMENT, TRAINING,
AND COMMITMENT TO OTHERS.



Training

2020 proved to be a very challenging year for training in the Selah Fire Department due to the COVID-19 pandemic. Despite not being able to train from the middle of March until the end of August, department members still attended 3108 hours of training. This training included 28 Wednesday night department drills, 5 officer meetings, 2 safety meetings, 3 department membership meetings, several online trainings, 27 new recruit training classes that included live burn evolutions, and 5 members attending limited outside training courses.

The outside training consisted of:

2 Firefighters taking the NWCG wildland Firefighter 1 online classes, 2 obtaining their Fire Instructor 1 certifications, 1 attended the Yakima County EMT program and obtained their Washington State and National Registry EMT certification.

During non COVID years, department, local, state and federal mandates require us to facilitate annual training of 4 Self Contained Breathing Apparatus (SCBA) donning and doffing for time evolutions, SCBA fit testing, 6 EMS OTEP Modules and 3 EMS practical workshops, EVIP classroom refresher with a practical driving road course and rodeo, wildland refresher classroom and shelter throw practical, a fitness pack test for wildland red card holders, minimum of 2 personal protective equipment (PPE) inspections and washes, Hazardous Materials (HAZMAT) training, and firefighter rescue (RIT/MAYDAY). A limited number of these trainings were offered and attended. Selah Fire Department policy requires 50% drill attendance by its members. Due to the guidelines set forth by our governor, modified requirements had to be made for 2020. 90% of all membership met the modified requirement.

The department hired 7 new volunteer firefighters this past year. They completed a 200 hour basic firefighter recruit school. This year's recruit school was conducted with online training, classroom lectures, and group practical evolutions.

As volunteer numbers continue to decline nationwide, recruitment and retention of volunteer firefighters becomes more and more challenging. We are working hard to improve our recruitment efforts, and I am pleased to say that there has been a significant increase of new recruits for the 2021 year.

Prepared By:
Training
Officer,
Lieutenant
Scott Willis

Fire Marshal

The Fire Marshal for the City of Selah is located at the Selah Fire Department, Station 21 on Fremont Avenue. Under the direction of this office; Fire and Life Safety Inspections are provided (at no charge) for all of the businesses in the City of Selah, plan review of developments and commercial construction are performed to meet standards of the International Fire Code, fire alarm-detection and suppression system operational tests are conducted, and pre-fire planning and fire department familiarization of our target hazard and populated locations are maintained.

In 2020 there were 253 businesses scheduled for annual Fire and Life Safety inspections within the city. Due to COVID and temporary closures of many businesses, only 124 initial inspections were conducted and 44 re-inspections were completed, for a total of 168 inspections performed. These inspections are accomplished by Fire Marshal and Engine Company visits. For new commercial construction inspections, the city's Fire Marshal and Building Inspector coordinate to perform inspections together, when available.

Fire department familiarization of target hazard locations are usually scheduled with local businesses during daytime hours on week days, and attended by career staff and any available volunteer members. For a few of our larger facilities, walk-throughs are scheduled during Wednesday evening drills and attended by all department members for preparation in case of an emergency.

These fire and life safety inspections are not only conducted to identify potential fire hazards, but also for the safety of employees and patrons. A few of the things we look at are:

Have the fire extinguishers been serviced and are appropriately placed, are emergency lights functioning properly, are exits identified and clear of obstacles, and have fire alarm systems and fire sprinkler systems been serviced and are operational?

Selah Fire Department

Working For a Safer Community



*Prepared By:
Fire Marshal
Jim Lange*

Apparatus

Our department operates and maintains 22 vehicles out of four stations consisting of:

3 - Command, 5 - Front Line Engines 1 Reserve, 1 - Rescue, 4 - Combination Brush/Rescues,
2 - Brush, 3 - Water Tenders, 1 - Air Support/Rehab, and 2 - Utility

The Selah Fire Department maintains a fleet of 22 vehicles. Revenues obtained through the Public Safety Utility Tax and additional funding from Fire District 2 have provided us the ability to establish an amortization program for equipment replacement. With a life expediency of 10 to 25 years depending on the type of vehicle and volume of use, we will need to replace one or more vehicles every year to maintain a dependable fleet and stay in compliance with national standards. In 2020 we purchased a new F-150 Command Vehicle to replace an 11 year old Command that was repurposed to a Brush Vehicle. We also did a body remount on our Rescue Vehicle at Station 21. Rescue 21 is our first out Aid Vehicle and with approximately 80% of our calls being EMS This piece of Apparatus will continue to be a vital part of our community's well being. We annually update our vehicle and equipment amortization, facility and personnel needs, overall health of the department and an assessment of what we anticipate for future needs.



The Selah Fire Department takes great pride in being fiscally responsible and working within the budget we have been entrusted.

We will continue to utilize your money wisely and work within the confines of our budget and provide all services that it allows.

Ultimately the citizens of our community dictate what is important to them and what level of service is acceptable.

Equipment

EMS SUPPLIES AND EQUIPMENT

SELAH FIRE DEPARTMENT WENT ON 1106 CALLS FOR MEDICAL EMERGENCIES IN 2020. DURING THESE CALLS THERE WERE MEDICAL SUPPLIES AND EQUIPMENT THAT IS USED THAT NEEDS REPLACED AND OR REPAIRED. SELAH FIRE DEPARTMENT WAS ABLE TO SEND OUR ONLY TRANSPORT CAPABLE APPARATUS, RESCUE -21 MOUNTED ON A NEW UPDATED CHASSIS AS WELL AS HAVING THE BOX REFURBISHED WITH ALL NEW LED LIGHTS AND UPDATED EQUIPMENT. WE WERE ALSO ABLE TO BUY NEW ELECTRONIC SUCTION UNITS THAT ARE A MAJOR UPGRADE FROM THE MANUAL SUCTION UNITS USED IN THE PAST.

DURING THIS TIME WE WERE ALSO ABLE TO UTILIZE THE DEPARTMENT OF EMERGENCY MANAGEMENT TO OBTAIN SUPPLIES THROUGH COVID RELIEF. SUPPLIES SUCH AS N-95 MASKS, GOWNS, EYE PROTECTION, AND GLOVES TO ENSURE THE SAFETY OF ALL OF OUR PERSONNEL THROUGHOUT THE COVID-19 PANDEMIC. THE DEPARTMENT OF EMERGENCY MANAGEMENT ALSO AIDED IN THE PROCUREMENT OF A STAIR CHAIR WHICH WILL HELP IN THE MOVING OF PATIENTS UP AND DOWN STAIRS TO FACILITATE MEDICAL TRANSPORT.

***Prepared By:**
Firefighter
Jacob Stuker*

PPE AND SAFETY EQUIPMENT

SELAH FIRE DEPARTMENT SUPPLIES PERSONAL PROTECTIVE GEAR FOR 65 MEMBERS. THIS GEAR INCLUDES STRUCTURE HELMETS, STRUCTURE COATS, STRUCTURE PANTS, STRUCTURE BOOTS, STRUCTURE GLOVES AND AN SCBA MASK. ALSO INCLUDED IS A WILDLAND HELMET, WILDLAND SHIRT, WILDLAND PANTS, WILDLAND BOOTS, AND WILDLAND GLOVES.

THE STRUCTURE GEAR HAS TO BE REPLACED EVERY 10 YEARS PER NFPA STANDARDS. OUR CURRENT REPLACEMENT PLAN IS 5 SETS OF STRUCTURAL GEAR EVERY YEAR. THIS EQUATES TO APPROXIMATELY \$12,000.00 ANNUALLY. CURRENTLY WE ARE WORKING TO REPLACE OUTDATED WILDLAND GEAR AS WELL.

SOME OF THE THINGS WE ARE DOING TO MAKE THIS POSSIBLE IS APPLYING FOR A DNR 50/50 GRANT. ALSO, WE HAVE BEGUN DISTRIBUTING WILDLAND BOOT VOUCHERS TO ALLOW OUR MEMBERS TO UPDATE THEIR WORN OUT WILDLAND BOOTS WITH BOOTS OF THEIR CHOICE, THAT MEET STANDARDS, UP TO \$330.00.

***Prepared By:**
Firefighter
Cody Roberts*

CURRENTLY ALL OF OUR GEAR MEETS NFPA STANDARD AND WE ARE WORKING HARD TO MAINTAIN THAT.

Awards and Recognitions

The annual Christmas and awards banquet for our members and their families was cancelled in 2020 due to COVID-19. This is the event where we usually hand out awards for the year, but some members were still recognized.

The following awards and recognitions were given.

YEARS OF SERVICE

5 Years –
15 Years –
35 Years –
45 Years—

Years of Service are recognized in 5 year increments.

FIREFIGHTER OF THE YEAR

Chosen by the membership
at each station.

Station 21 -
Station 22 -
Station 24 -
Station 26 -

ROOKIE OF THE YEAR

Chosen by the officers and given annually
to the most outstanding new member.

Chloe Gordon

NEW MEMBERS COMPLETING PROBATION

**Bill Bena, Chloe Gordon, Hailey Kincaid,
Charter Lantrip, Derick Moudy, Casey San-
ford, and Kylie Widner**

TOP RESPONDER

Member that responded to the
most incidents.

Isaac Cleverly

FIRE DOG GYM

Member that used the
work out equipment
the most.

No award



Winner of the Support Services Quilt Raffle, **no raffle**