

# *Selah Fire Department*



## *2024 Year End Report*

*Prepared By: Fire Chief James Lange and staff*

# ***INDEX***

	Page
MESSAGE FROM THE CHIEF.....	3
DEPARTMENT HISTORY.....	4
OUR RESPONSE AREA.....	5
ELECTED OFFICALS AND FACILITIES.....	6-7
MISSION STATEMENT.....	8
ORGANIZATION CHART.....	9
CALLS FOR SERVICE.....	10
PUBLIC EDUCATION.....	11-12
TRAINING.....	13-14
FIRE MARSHAL/INSPECTIONS.....	15
OTHER ACTIVITIES.....	16
APPARARUS.....	17
EQUIPMENT.....	18
AWARDS AND RECOGNITIONS.....	19
THANK YOU.....	20

# *Message from the Chief*

On behalf of all paid-on-call and career members of the **Selah Fire Department**, it is my privilege to present the 2024 Annual Report. The Selah Fire Department is committed to enhancing the quality of life for present and future generations of our community. We protect lives and property through Public Education, Fire Prevention, Fire Suppression, and Emergency Medical Services. Each member of our department is dedicated to serving our community with honesty, integrity and respect for each other and all we serve. We are grateful for the continued support from our community, city and district administration, elected officials, and all of the city departments that work to make our community great. Without your support, it would not be possible for us to meet our mission.

As we look to the future, we recognize several challenges for the operation and maintenance of the department. The first being funding to maintain our current level of service and second, staffing to meet the needs of a growing community. Over the last couple of years, we have endured steep cost increases due to inflation. Additionally, our department had a 10% call volume increase last year which has had a major impact on expenses. Our current levy is supporting the operation of the department, but we need to consider going back to the voters for support in the near future.

Because of the support of our community, we are proud to announce that the insurance rating of the area we serve has improved. Effective February 1, 2022, Washington Survey and Ratings Bureau improved the Protection Classification in the city from PC 5 to PC 4, and areas of the district were also improved. This has a direct, positive impact on business and home owner insurance rates.

Our organization is focused on providing the safest work environment possible for your Fire/EMS responders. We diligently strive to be the most effective and efficient public safety organization, while giving consideration to the ever changing environment and the necessary evolution of our service. As our community continues to grow, we embrace our responsibility of providing the highest level of care and service to meet the challenges and demands of our community.

Finally, I express a sincere “thank you” to all of the members of the Selah Fire Department. I take great pride in representing such an outstanding group of individuals that continually demonstrate a commitment to the success of this department.

I would like to thank the commissioners of Yakima County Fire District 2 and the City of Selah Mayor and council for allowing me to serve as your fire chief.

Respectfully,

James R. Lange

# ***DEPARTMENT HISTORY***

On January 8, 1940, the Selah Town Council signed Ordinance #90, which provided for the organization, maintenance and regulation of a fire department in the Town of Selah, Washington. Thus was born the Selah Fire Department.

S.C. Justice was appointed as the Fire Chief of the new department consisting of 1 truck, 5 officers and 14 volunteer firefighters.

In 1946 a Rural Fire District (RFD) later to be known as Yakima County Fire Protection District #2 was formed and manned by the Selah Fire Department. This includes the area North of Lookout Point between Selah Heights and the Yakima River, North to Adobe Hill and the hill tops South of Wenas Lake Dam.

East Selah was annexed into Yakima County Fire Protection District #2 in 1960 and the upper Wenas Valley in 1975 creating a combined area 26 miles long and 7 miles wide at its widest point.

The City of Selah and Yakima County Fire Protection District #2 legally combined their fire departments in 1966 creating the department that now exists.

This move was one of the most progressive actions taken since the creations of both fire departments. It has saved the taxpayers thousands of dollars by eliminating duplication in administrative costs, equipment and building needs, operational costs and utilization of manpower.

From this simple beginning, the department now serves an area of 65 square miles and an estimated population of approximately 21,000.

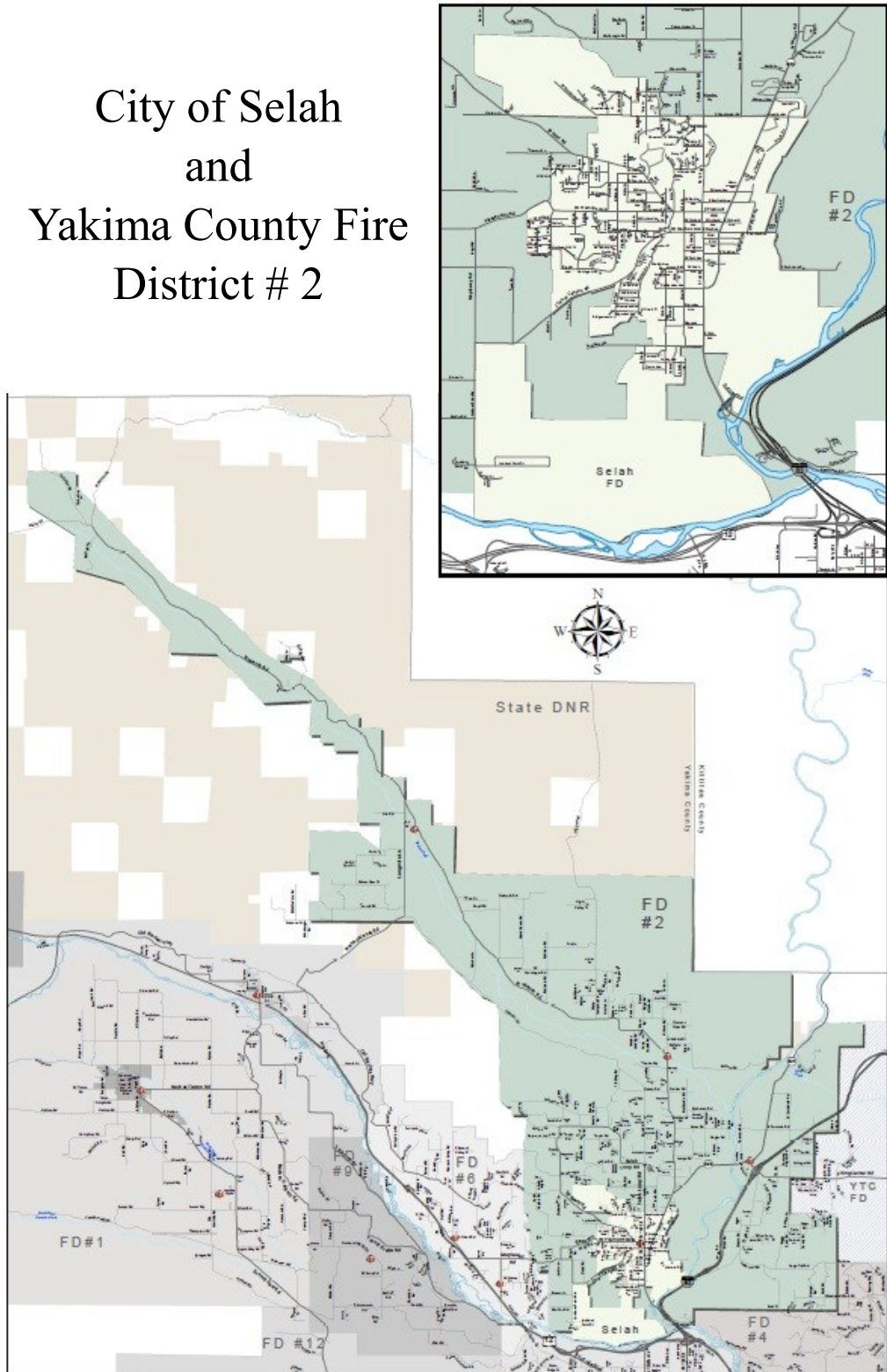
In 1940 the Selah Fire Department responded to 6 fire alarms, 4 of which were actual fires, with a total property loss of \$75.00. In 2024, the Selah Fire Department responded to a total of 2,254 calls for service. Nearly 80% of those calls are medical incidents, and there are multiple calls/overlapping calls 23% of the time. This makes the Selah Fire Department the busiest fire district in Yakima County.

# ***SELAH FIRE DEPARTMENT RESPONSE AREA***

City of Selah  
and  
Yakima County Fire  
District # 2

The Selah Fire Department response area covers approximately 65 square miles.

Roughly 5 square miles and a population of 8,450 within the city limits of Selah and 60 square miles and a population approximately 12,550 within Fire District #2.



# ***YAKIMA COUNTY FIRE PROTECTION DISTRICT #2 COMMISSIONERS***

**Chairman.....Dan Boyle**

**Commissioner.....Brad Helms**

**Commissioner.....Rex Reed**

**Secretary.....Christine Willis**

The Fire Commissioners form a board elected by the public to represent their fire district.

Yakima County Fire District 2 commissioners serve six-year terms staggered every two years. Any resident, 18 years or older, who lives within the district boundaries are eligible to run for an open position on the board.

All regular meetings are held at 6:30 p.m. on the second Tuesday of every month at Station 21, 206 W. Fremont Avenue. Meetings are open to the public and offer residents an opportunity for public comment.

## **SELAH FIRE DEPARTMENT'S DISTRICT STATIONS**



**STATION 22**  
**1830 Harrison Rd.**  
**Yakima, WA 98901**

**STATION 24**  
**4251 N. Wenas Rd.**  
**Selah, WA 98942**



**STATION 26**  
**121 Fink Rd.**  
**Selah, WA 98942**



# ***CITY OF SELAH MAYOR, ADMINISTRATOR AND COUNCIL***

## **Mayor**

**Roger Bell**

**SELAH FIRE DEPARTMENT'S  
CITY STATION**

## **City Administrator**

**Richard Huebner**

## **Council Members**

**Kevin Wickenhagen**

**Jared Iverson**

**Elizabeth Marquis**

**Clifford Peterson**

**William Longmire**

**Michael Costello**

**David Monaghan**



**Station 21**

**206 W. Fremont Ave**

**Selah, WA 98942**

**Selah has a strong Mayor, council  
form of government.**



# ***SELAH FIRE DEPARTMENT MISSION, VISION AND MOTTO***

**OUR MISSION IS THE PROTECTION OF LIFE AND PROPERTY, AND TO REDUCE THE FREQUENCY AND MAGNITUDE OF PERSONAL TRAUMA AND PROPERTY LOSS. TO EFFECTIVELY MITIGATE THE KNOWN AND UNKNOWN EMERGENCIES THAT WILL OCCUR.**



## **VISION**

**To position the fire department securely (operationally, financially, and politically) through and beyond our current state of growth, while creating a predictable and sustainable future.**

## **MOTTO**

***Honesty - Integrity - Respect***

**We value the public's trust and are committed to honest and ethical behavior. We hold ourselves accountable to this value. We believe in a personal commitment to the organization and community. Self-discipline is the foundation for managing behavior.**

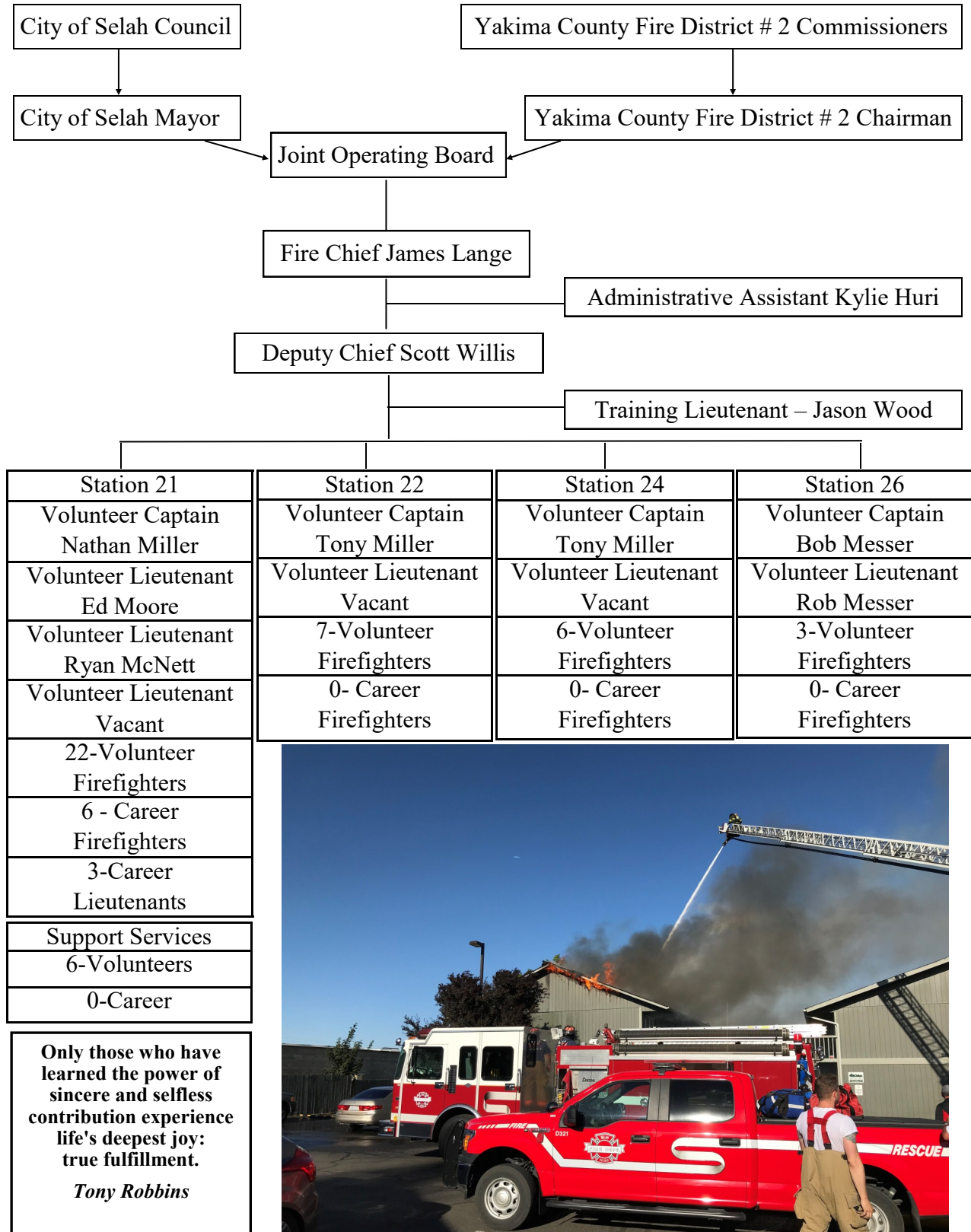
**We are a fire department family. We are committed and accountable to each other because our lives depend on it. We value the role each member plays in our organization. We respect those that came before us and will strive to make the organization better for those who follow.**

**In order to carry a positive action we must develop here a positive vision.**

**[Dalai Lama](#)**



# ***FIRE DEPARTMENT ORGANIZATIONAL CHART AND STAFFING LEVEL***



# ***CALLS FOR SERVICE***

The Selah Fire Department Responded to 2,254 Calls in 2024

## BREAKDOWN OF MAJOR INCIDENT TYPES

	Emergency Medical	Motor Vehicle Accidents	Fires in Structures	Grass/Brush Fires	Vehicle Fires	Other Fires	All Other Types	TOTALS	
City of Selah	767	42	15	4	7	19	67	921	40.9%
Yakima County Fire District #2	1,014	44	23	80	23	46	103	1,333	59.1%
								2,254	6.18 per day

**23% of the time there multiple calls at once.**





# *Public Education/ Community Service*

## Fire Safety classes and Station Tours

2024 Fire Prevention and Public Education was able to educate 743 children from numerous groups wanting Fire Prevention Education. Central Lutheran Preschool, John Campbell Primary, Robert Lince, other groups among the Selah School District, and a home school group visited the Station. With the assistance of fellow firefighters, these children had an amazing time. Pre-school and kindergarten classes learned the importance of never being afraid of firefighters and that although they can look scary in their bunker gear, firefighters are there to help them in the event of an emergency. All the children loved the tour, loved the trucks and activities that they were able to experience.

## Exit Drills In The Home (E.D.I.T.H. House)

EDITH House was back up and running! 279 children from John Campbell Primary were able to learn the steps on how to get out of their home in the event of a fire. E.D.I.T.H teaches the kids that when they see smoke or hear their smoke detectors going off that they need to get OUT! Children are taught to always have **TWO** ways out. **CRAWL** under the smoke, and once out, they need to go to their **MEETING PLACE**, and never ever go **BACK INSIDE**.

Between the schools and the other groups wanting to visit the fire station, **743** kids and **173** adults learned the importance of fire prevention, and fire safety. Prevention through education saves lives, saves property, prevents injuries and saves money.

*Prepared  
By:  
Lieutenant  
Jason Wood*



Tell me and I forget. Teach me and I remember. Involve me and I learn.

# *Public Education/ Community Service*

## **National Night out/Trunk or Treat**

**National Night Out** was held again in 2024, and Truck 21 was on display. Although there was not an extrication demonstration, the crews still showed off the new ladder truck and talked about the fire department. The event was a huge success, great job Selah PD.

**Trunk or Treat**, the communities Halloween party, where hundreds of pounds of candy is handed out for kids in a safe environment, from all the local businesses and community groups.

The Fire Department again teamed up with the Selah Police Department and handed out candy to the children of Selah and beyond.

The Selah Fire Department looks forward to next year and being involved again with this great event!





# *Training*

TRAINING IS A NEVER-ENDING  
JOURNEY IN A FIREFIGHTER'S  
CAREER OF SERVICE.

TO BE KNOWN AS A FIREFIGHTER  
IS A TITLE OF PRIDE, BORN OF  
ACCOMPLISHMENT, TRAINING,  
AND COMMITMENT TO OTHERS.



*Prepared By:*  
*Lieutenant*  
*Jason Wood*



# *Training*

In 2024, the members of the Selah Fire Department attended approximately 3,800 hours of training. This training included; 51 Wednesday night department drills, 9 Officer meetings, 4 quarterly safety meetings, 1 annual department meeting, several certified online trainings, 29 new recruit training classes, and several members attended outside training courses.

The outside training consisted of:

2 attending the Yakima County EMT program, 3 obtained their FEMA Incident Command 300 certification, 4 obtained their FEMA Incident Command 400 certification, 2 career staff obtained IFSAC Instructor 1 certification, 2 career staff obtained IFSAC Instructor 2 certification, 1 career staff obtained IFSAC Officer 2 certification. One member achieved a Managing Fire Officer degree from the National Fire Academy. Two of our members have been trained in the Responder Strong Mental Health Awareness program. Two of our members obtained their Single Resource Boss certification under the NWCG and will be working toward their ICT4 certification in 2025.

All career combat staff have obtained or are working toward the IFSAC Firefighter 1 certification, which is the nationally recognized standard for combat firefighters, and the paid on call membership is being encouraged to work toward the certification.

Truck 21 training has been well underway. The training officer has been reaching out and receiving assistance from local subject matter experts regarding aerial operations and training. The full time staff will be fully trained on the apparatus in 2025, and the training material for the paid on call staff will be developed and disseminated following the career staff's onboarding.

Department, local, state and federal mandates require us to facilitate annual training of 4 Self Contained Breathing Apparatus (SCBA) donning and doffing for time evolutions, SCBA fit testing, 4 EMS OTEP Modules and 4 EMS practical workshops, EVIP classroom refresher with a practical driving road course and rodeo, wildland refresher classroom and shelter throw practical, a fitness pack test for wildland red card holders, minimum of 2 personal protective equipment (PPE) inspections and washes, Hazardous Materials (HAZMAT) training, and firefighter rescue (RIT/MAYDAY). All of these trainings were offered and attended. Selah Fire Department policy requires 50% drill attendance by its members. In 2024, 86% of all membership met this requirement.

The department hired 3 new volunteer firefighters this past year. They completed a 130 hour basic firefighter recruit school. This year's recruit school was conducted with online training, classroom lectures, and group practical evolutions, along with attending weekly drills with the rest of the membership.

As volunteer numbers continue to decline nationwide, recruitment and retention of volunteer firefighters becomes more and more challenging. We are working hard to improve our recruitment efforts. We are optimistic and encouraged with some new ideas, and opening our borders to out of district new volunteers and lateral volunteers has shown to be successful.

# ***Fire Marshal***

The Fire Marshal for the City of Selah is located at the Selah Fire Department, Station 21, on Fremont Avenue. Under the direction of this office; Fire and Life Safety Inspections are provided for all of the businesses in the City of Selah, plan review of developments and commercial construction are performed to meet standards of the International Fire Code, fire alarm-detection and suppression system operational tests are conducted, and pre-fire planning and fire department familiarization of our target hazard and populated locations are maintained.

The goal for 2025 is to get all current businesses inspected, up to date and implement the fee schedule that was approved in 2023. These inspections are completed by the Fire Marshal and Engine Company visits. For new commercial construction inspections, the City's Fire Marshal and Building Inspector coordinate to perform inspections together when available.

Fire department familiarization of target hazard locations are usually scheduled with local businesses during daytime hours on weekdays and attended by career staff and any available paid-on-call members. For a few of our larger facilities, walk-throughs are scheduled during Wednesday evening drills and attended by all department members for preparation in case of an emergency.

These fire and life safety inspections are not only conducted to identify potential fire hazards, but also for the safety of employees and patrons. A few of the things we look at are: have the fire extinguishers been serviced and are appropriately placed, are emergency lights functioning properly, are exits identified and clear of obstacles, and if fire alarm systems and fire sprinkler systems have been serviced and are operational.

## ***Selah Fire Department***

### ***Working For a Safer Community***



***Prepared By:  
Deputy Chief  
Scott Willis***





# *Other Activities*

## **Hydrant inspection and testing**

The fire department inspects, tests, lubricates and exercises the valves on all of the 429 fire hydrants within the city and private systems within the district on an annual basis. We also conduct fire flow testing every 5 years or as needed when changes are made to the water system. These are necessary to determine the maximum flow the water system can provide in the event of a fire. These calculations are used to determine the maximum square footage of residential and commercial buildings in a given geographical area. They also provide hard data to the city's engineering firm to enhance their computer model of the water system. This year we continued painting hydrants different colors which represents the flow in gallons per minute. Light blue 1500 + GPM, Green 1000-1499 GPM, Orange 500-999 GPM, and Red is below 500 GPM.

*Prepared By:*  
*Lieutenant*  
*Cody Roberts*

It's all fun and games.... Until you have to pick it up!





# *Apparatus*

Our department operates and maintains 22 vehicles out of four stations consisting of:

3 - Command, 4 - Front Line Engines, 1 Reserve Engine, 1 - aerial, 1 - Rescue, 4 - Combination Brush/Rescues, 2 - Brush, 3 - Water Tenders, 1 - Air Support/Rehab, and 2 - Utility

Revenues obtained through the City of Selah Public Safety Utility Tax and a portion of the funding from Yakima County Fire Protection District #2 have provided us the ability to establish an amortization program for equipment replacement. With a life expediency of 10 to 25 years, depending on the type of vehicle and volume of use, we will need to replace one or more vehicles every 1-2 years to maintain a dependable fleet and stay in compliance with national standards. In 2022 we purchased the department's first ever aerial apparatus (ladder truck). This piece of apparatus will assist us with larger building fire events, rescues in multi-story buildings, and will help to continue keeping insurance costs down. The process of building an aerial is time consuming, but we have finally received the truck and are training with it. The department annually updates our vehicle and equipment amortization plan, facility and personnel needs, overall health of the department and completes an assessment of what we anticipate for future needs. This can all be found in our Capital Improvement Plan.



The Selah Fire Department takes great pride in being fiscally responsible and working within the budget we have been entrusted.

We will continue to utilize your money wisely and work within the confines of our budget and provide all services that it allows.

Ultimately the citizens of our community dictate what is important to them and what level of service is acceptable.

# *Equipment*

## **EMS SUPPLIES AND EQUIPMENT**

Approximately 80% of the emergency calls that the Selah Fire Department responds to are calls for emergency medical help. During these calls there are medical supplies and equipment that need replaced and or repaired. In 2024 Selah Fire Department was issued 5 LUCAS mechanical chest compression device through the Yakima County EMS department that improves the quality of CPR the Selah Fire Department offers. Aging glucometers have also been replaced with models that are used by our neighbors and EMS partners who respond into our area.

*Prepared By:*  
*Lieutenant*  
*Jacob Stuker*

## **PPE AND SAFETY EQUIPMENT**

Selah Fire Department supplies personal protective gear for 70 members.

This gear includes structure helmets, structure coats, structure pants, structure boots, structure gloves and an SCBA mask. Also included is a wildland helmet, wildland shirt, wildland pants, wildland boots, and wildland gloves. It cost roughly \$6,000 per person to fully equip a member with NFPA compliant gear.

The structure gear has to be replaced every 10 years per NFPA standards. Our current replacement plan updates 5 sets of structural gear every year. This equates to approximately \$14,000.00 annually.

Some of the things we are doing to make this possible is applying for a DNR 50/50 grant. With this grant, we were able to purchase wildland fire shelters to equip some of our structural fire engines, replace worn out wildland gloves, purchase class A wildland firefighting foam, and provide replacement wildland gear (pants and coats.) This year's focus has been working to prepare for 2026 gear expiration. In 2026, 25 sets of structural gear will expire equating to nearly \$60,000 in replacement to stay in NFPA compliance. In 2024 we were able to order 6 sets of structural gear totaling \$17,000. This year we received the Firehouse Subs grant allowing us to purchase 15 wildland shelters at a cost of nearly \$600.00 per unit and 15 dozer packs to carry the shelters, at a cost of nearly \$100.00 per unit, totaling \$10,500.00 in savings to our community.

Currently all of our gear meets NFPA standard and we are working hard to maintain that.

*Prepared By:*  
*Lieutenant*  
*Cody Roberts*

# *Awards and Recognitions*

The annual Christmas and awards banquet for our members and their families was held in December. We had a great turnout in 2024.

The following awards and recognitions were given.

## YEARS OF SERVICE

**5 Years –**

**10 Years –** Dwight Derby, Colton Holbrook, Josh Redtfeldt

**15 Years –** Jacob Stuker

**20 Years –**

**40 Years –**

## FIREFIGHTER OF THE YEAR

Chosen by the membership  
at each station.

Station 21 - Austin Peyser

Station 22 - Dylan Apodaca

Station 24 - Cameron Ross

Station 26 - Robert Messer Jr.

## ROOKIE OF THE YEAR

Chosen by the officers and given annually  
to the most outstanding new member.

**Genavieve Lobos**

## NEW MEMBERS COMPLETING PROBATION

**Genavieve Lobos, Hailey Kincaid and Kyle Glaspie**

## TOP RESPONDER

Member that responded to the  
most incidents.

**Dylan Apodaca**

## OFFICER OF THE YEAR

Chosen by the membership for  
outstanding leadership

**Nathan Miller**

## FIRE DOG GYM

Member that used the  
gym the most.

**None**



*The Selah Fire Department  
sincerely thanks you for your  
continued support.*

*We live in a wonderful com-  
munity and we strive daily to  
be the best fire department to  
serve you.*

